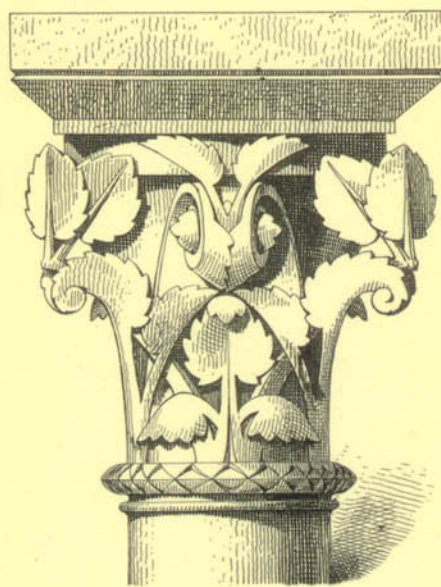
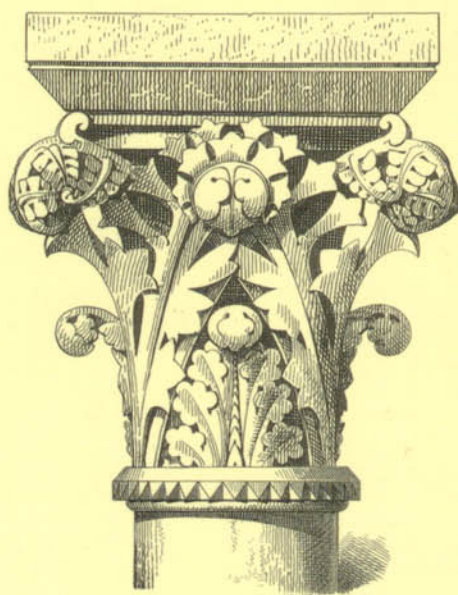
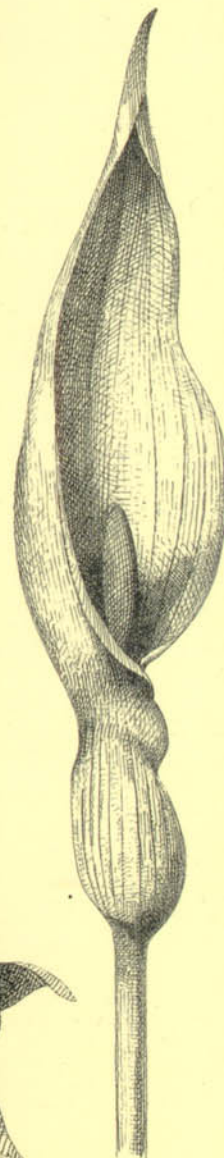
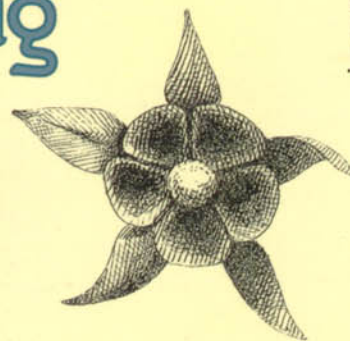


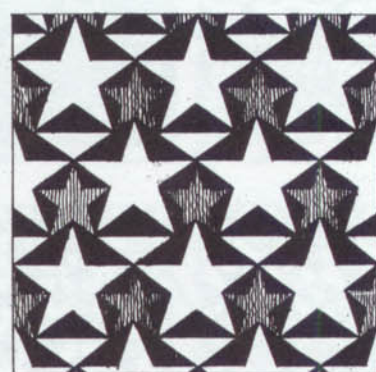
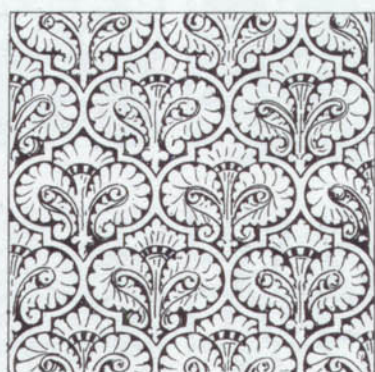
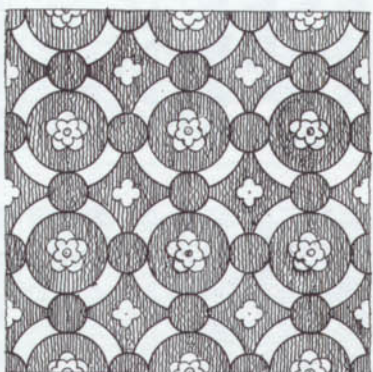
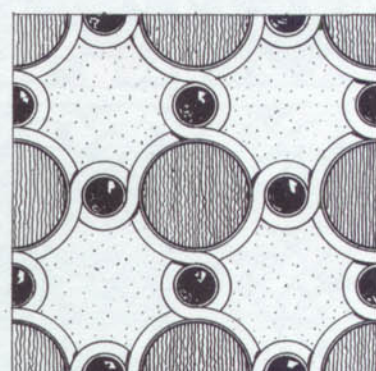
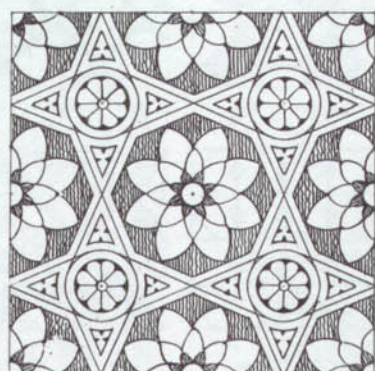
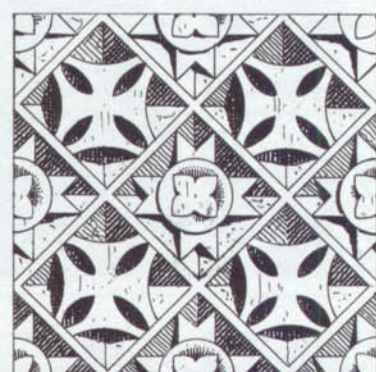
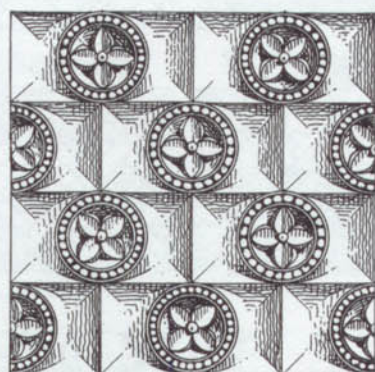
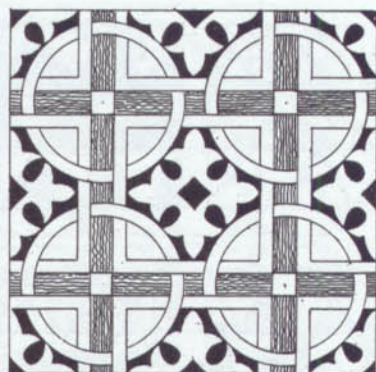
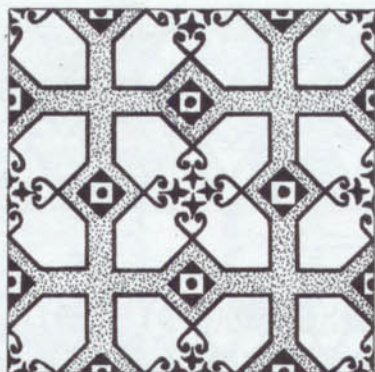


Victorian Foliage Designs



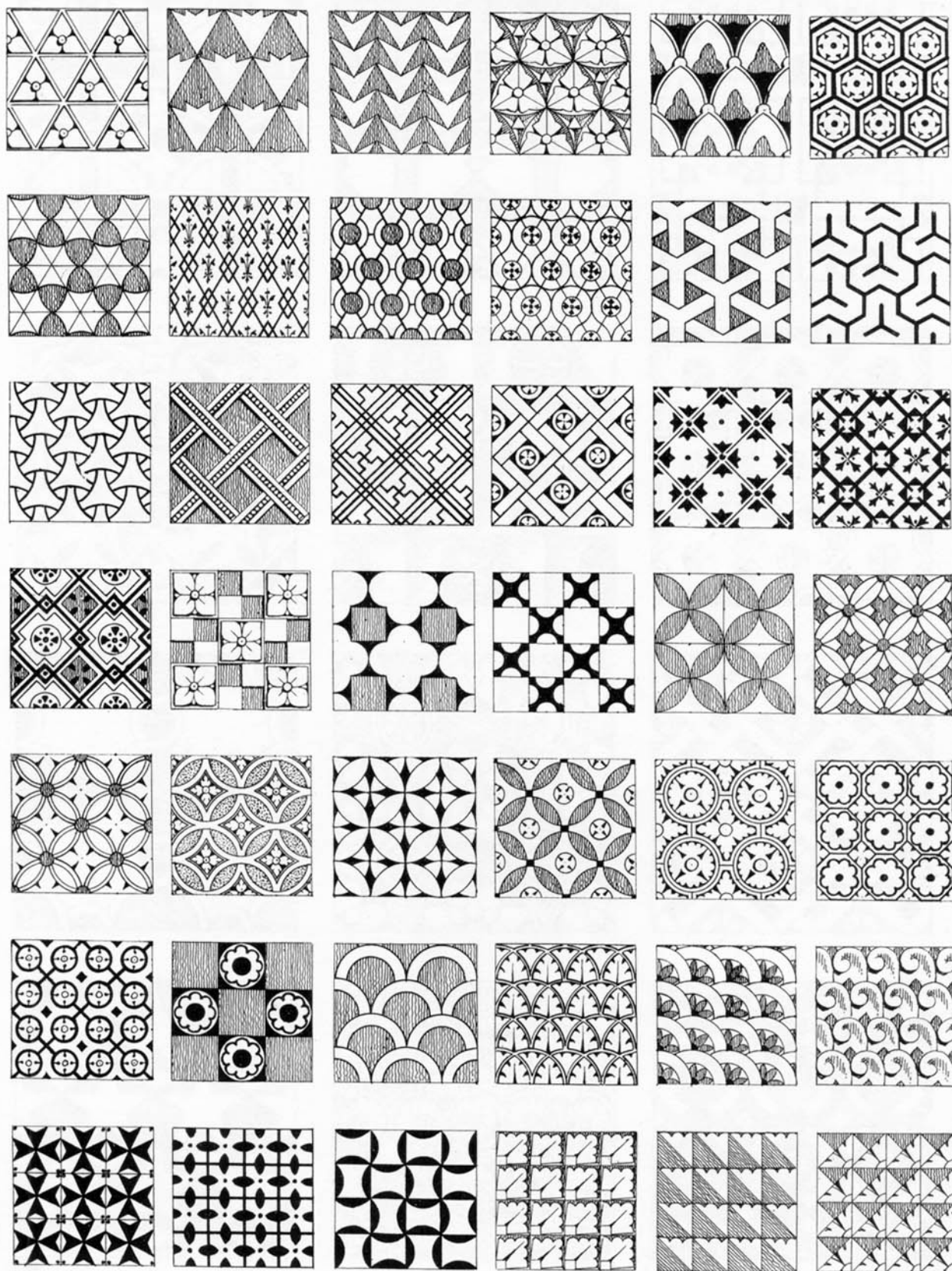
James K. Colling



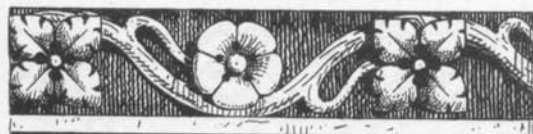
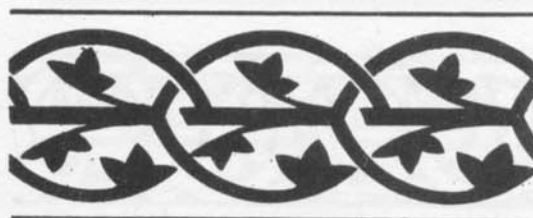
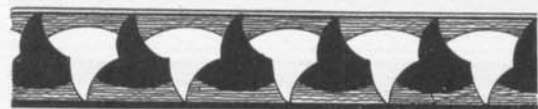
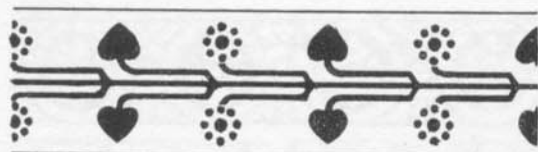


ANALYSIS OF FORM.—DIAPERS.

35

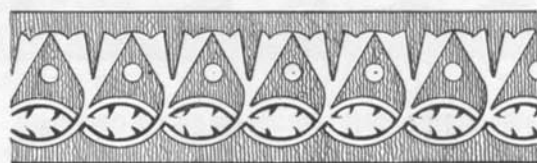
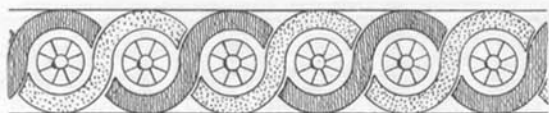


ANALYSIS OF FORM. — DIAPERS.

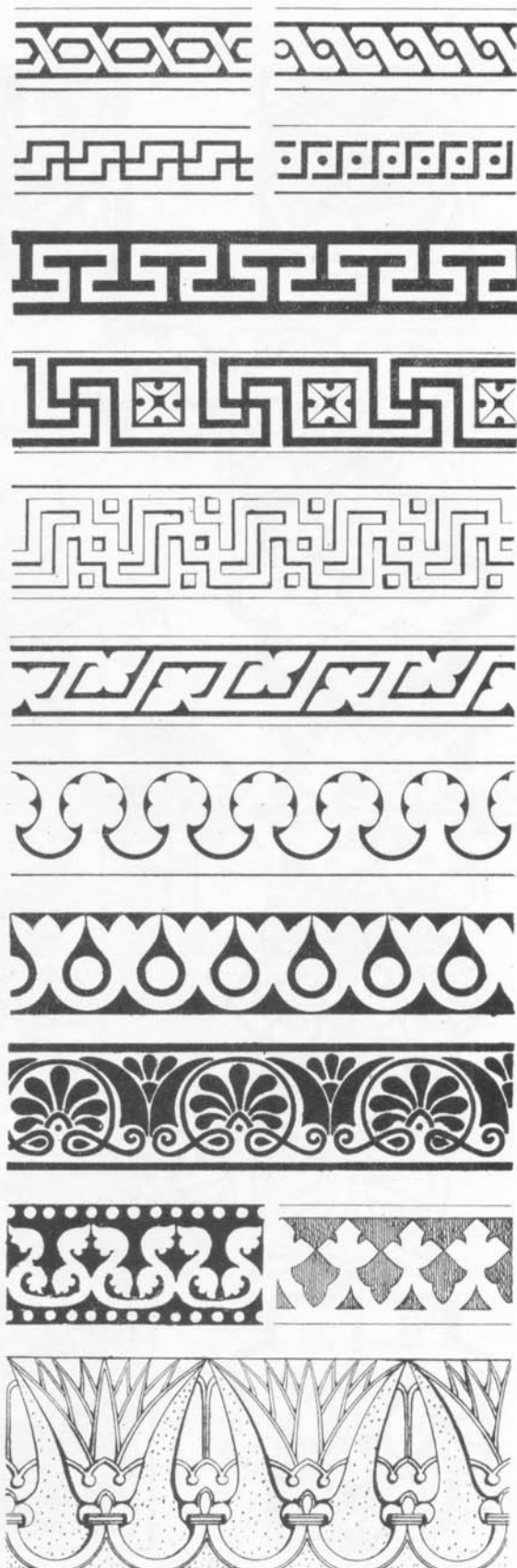
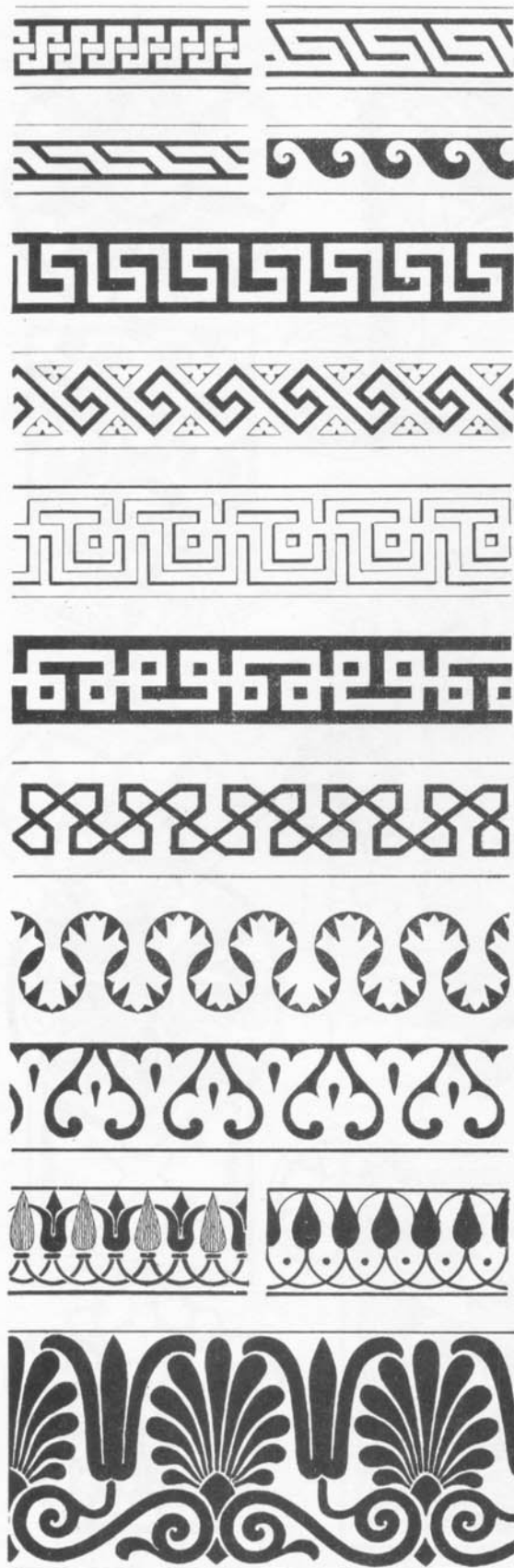


ANALYSIS OF FORM - BORDERS, BRANCHING AND HEART FORM.

8

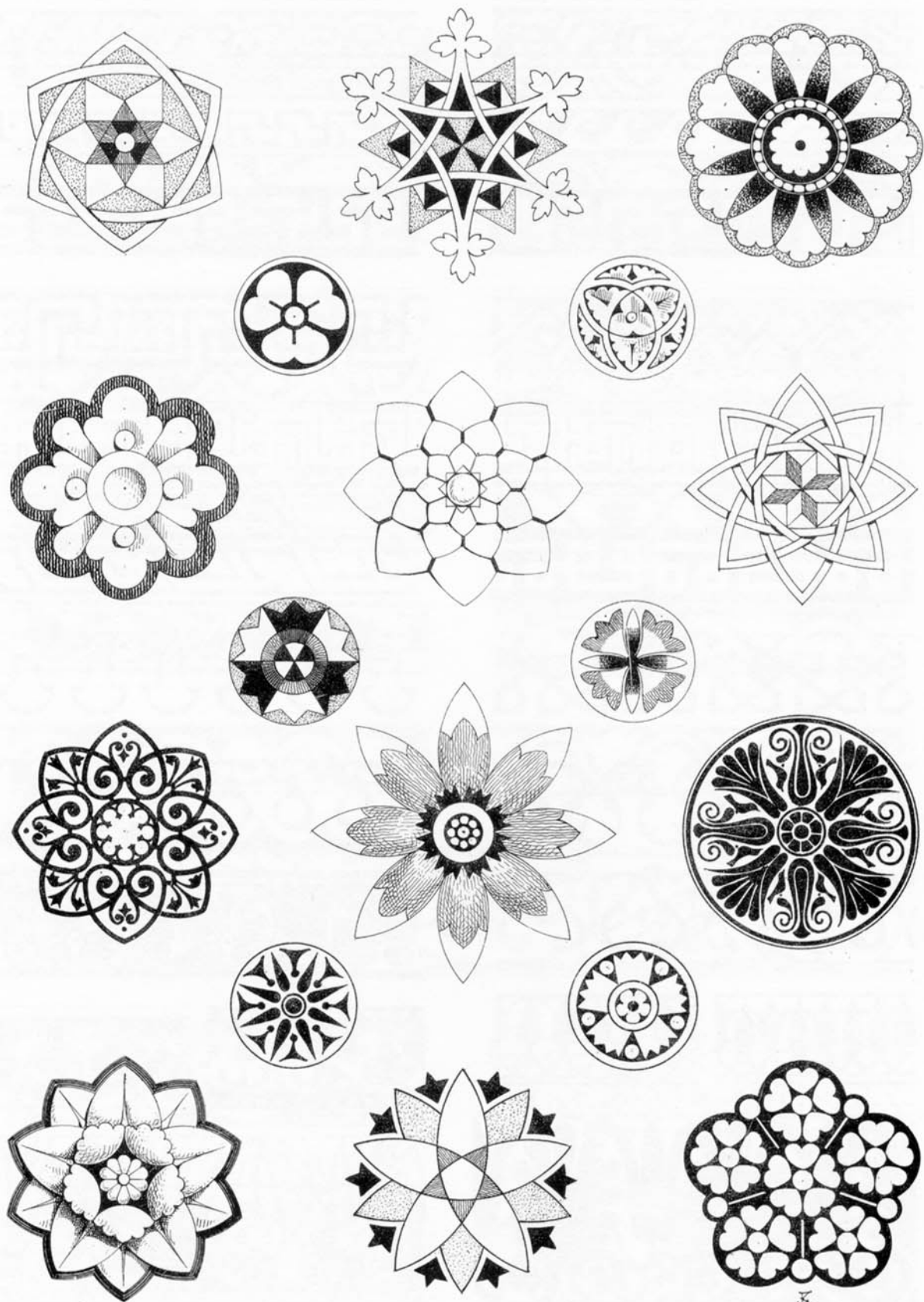


ANALYSIS OF FORM. BORDERS — GUILLOCHE AND WAVE LINE. ³

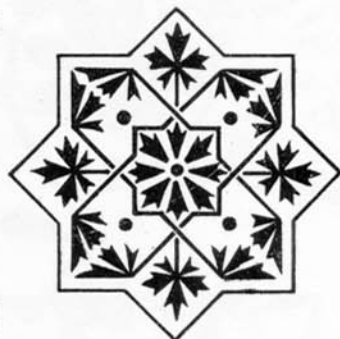
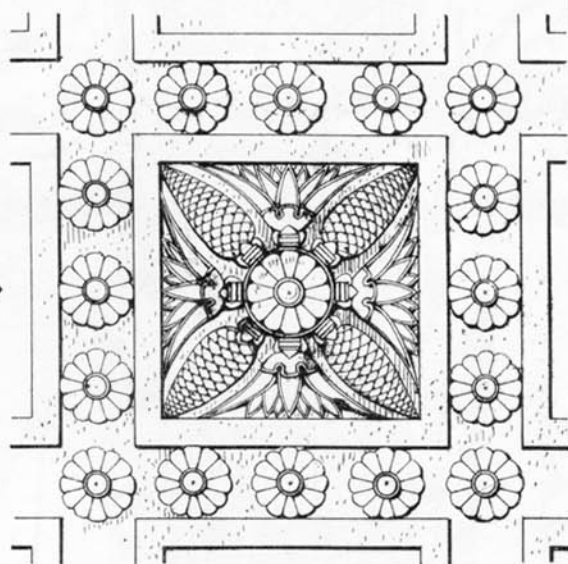
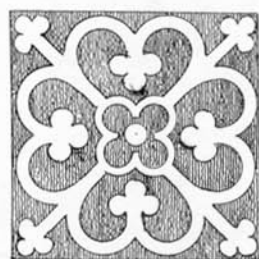


ANALYSIS OF FORM. BORDERS — FRET AND ANTHEMION

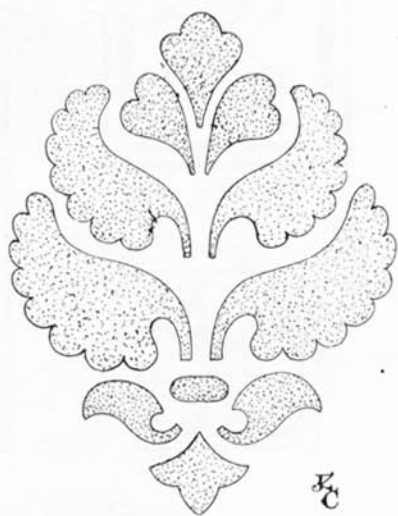
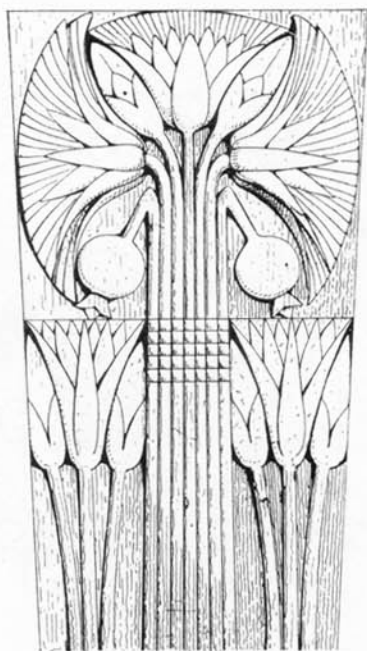
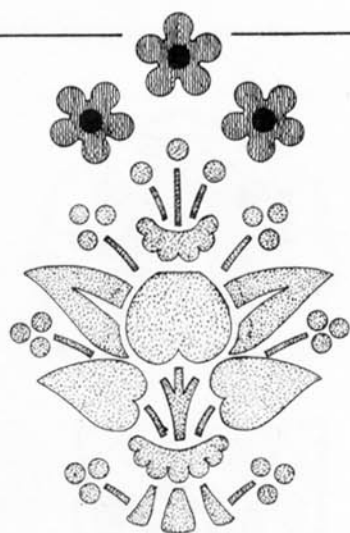
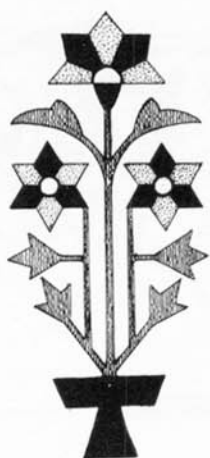




ANALYSIS OF FORM. CENTRES — CIRCULAR.



ANALYSIS OF FORM. CENTRES — SQUARE.



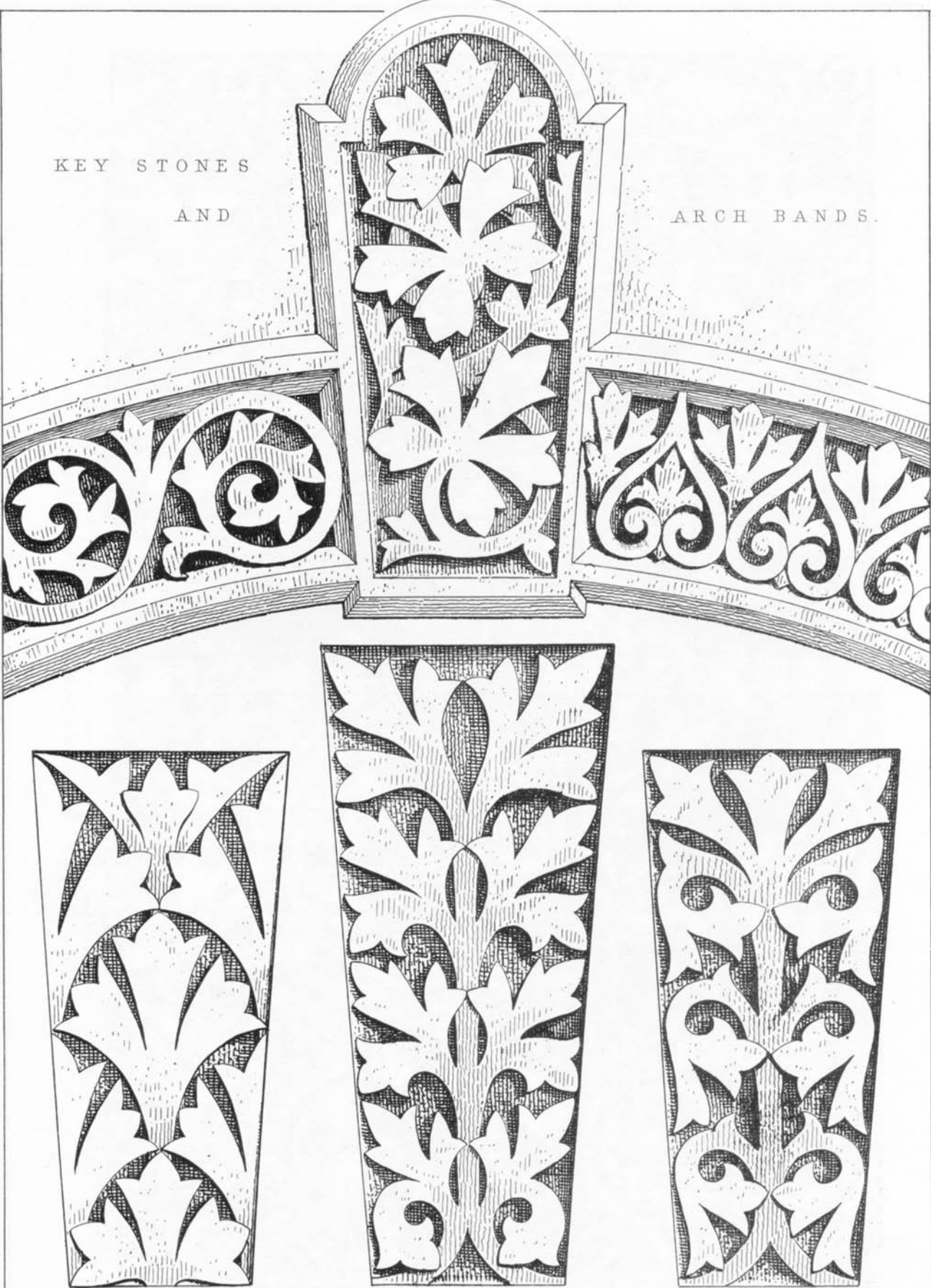
EC

ANALYSIS OF FORM.—SPRIGS.

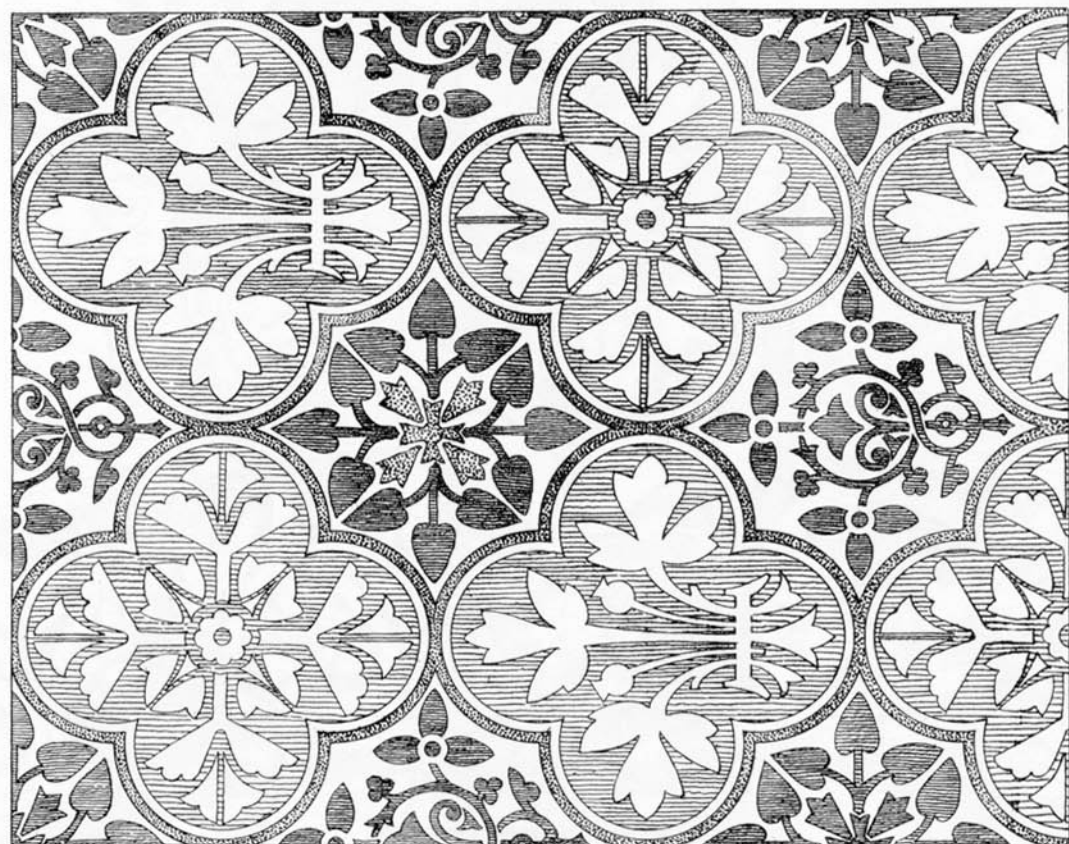
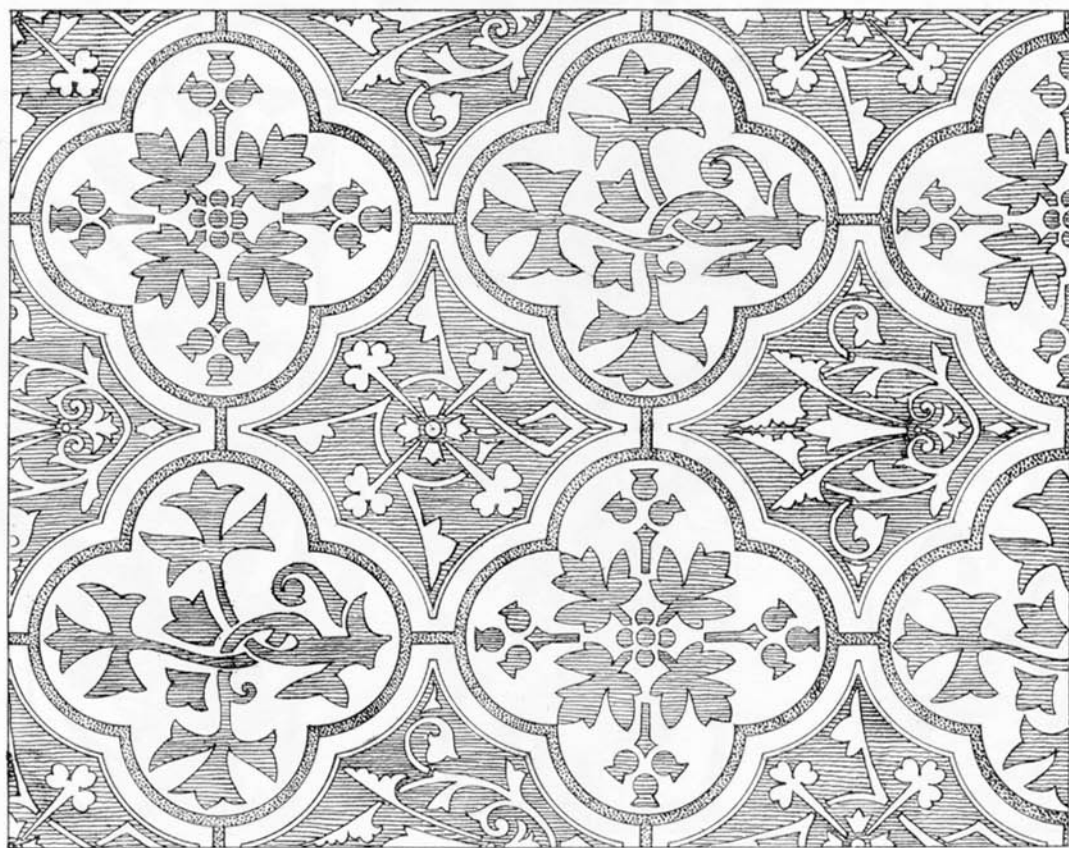
KEY STONES

AND

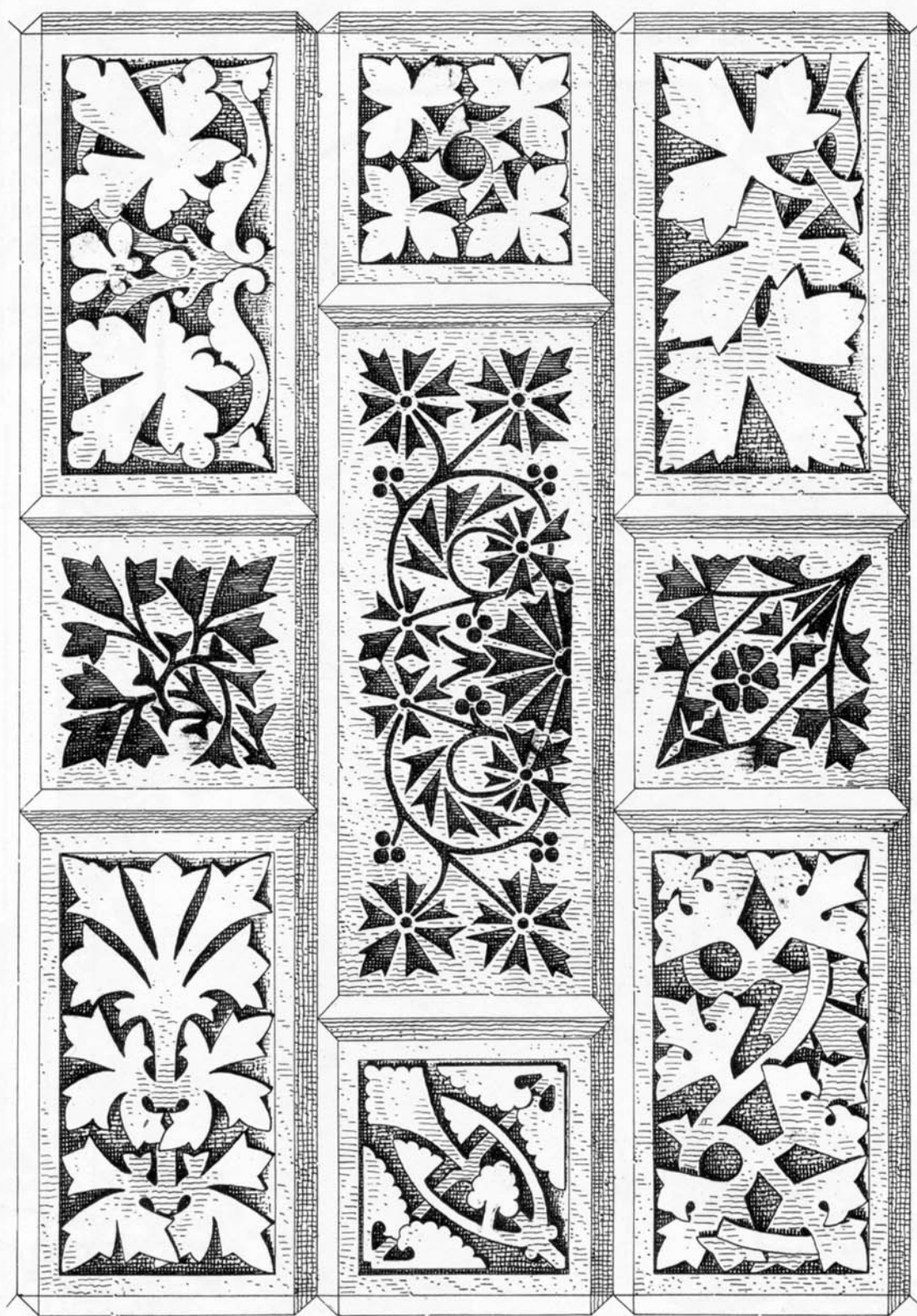
ARCH BANDS.



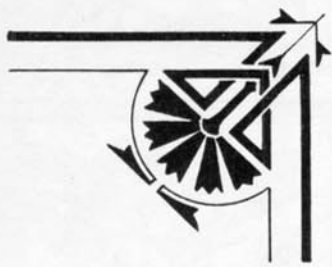
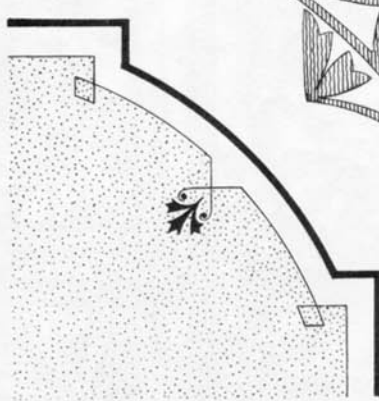
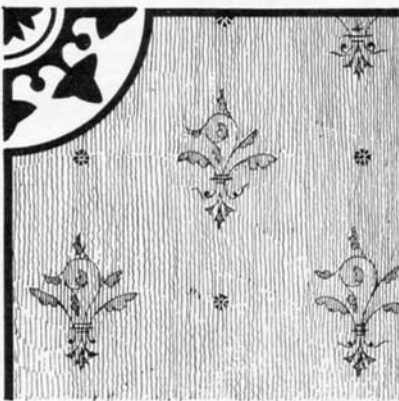
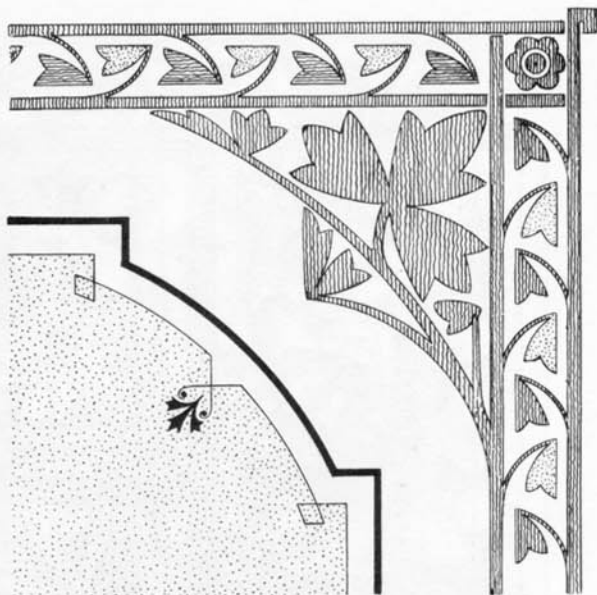
FC



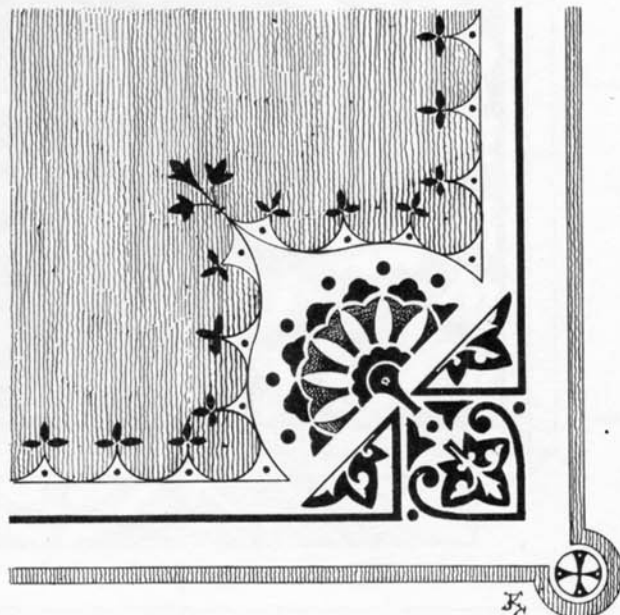
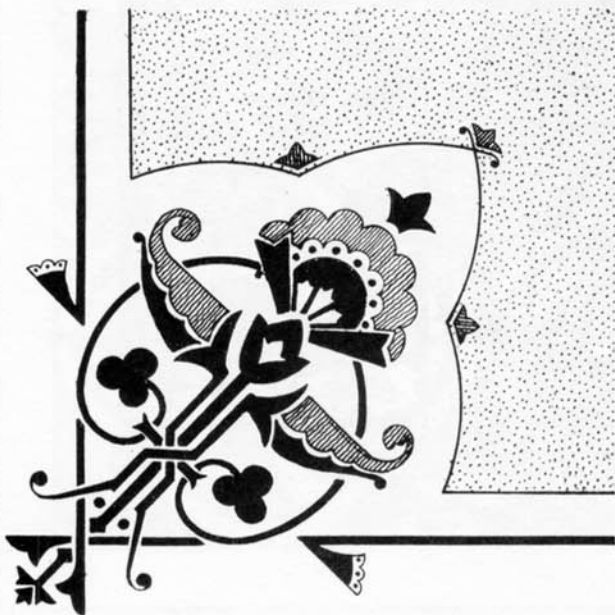
PAPER HANGINGS OR WOVEN FABRICS.

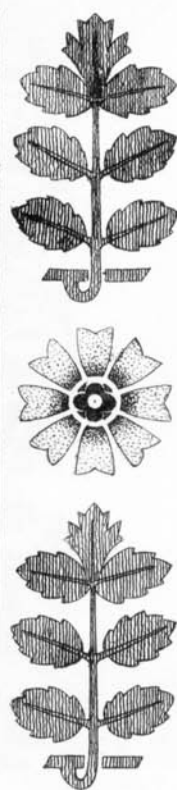
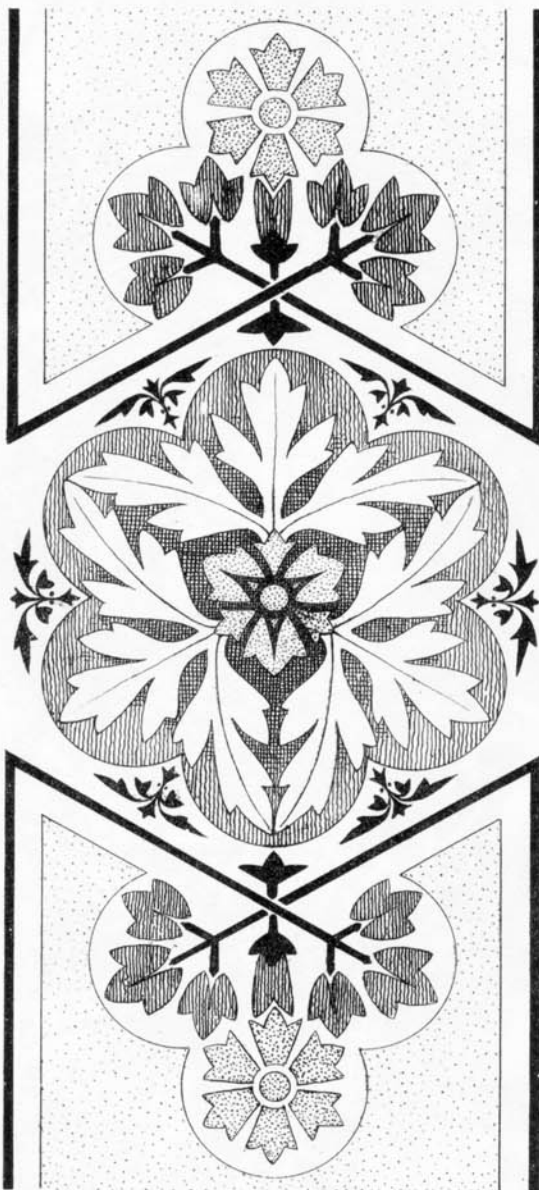


STONE QUOINS AND RUSTIC WORK

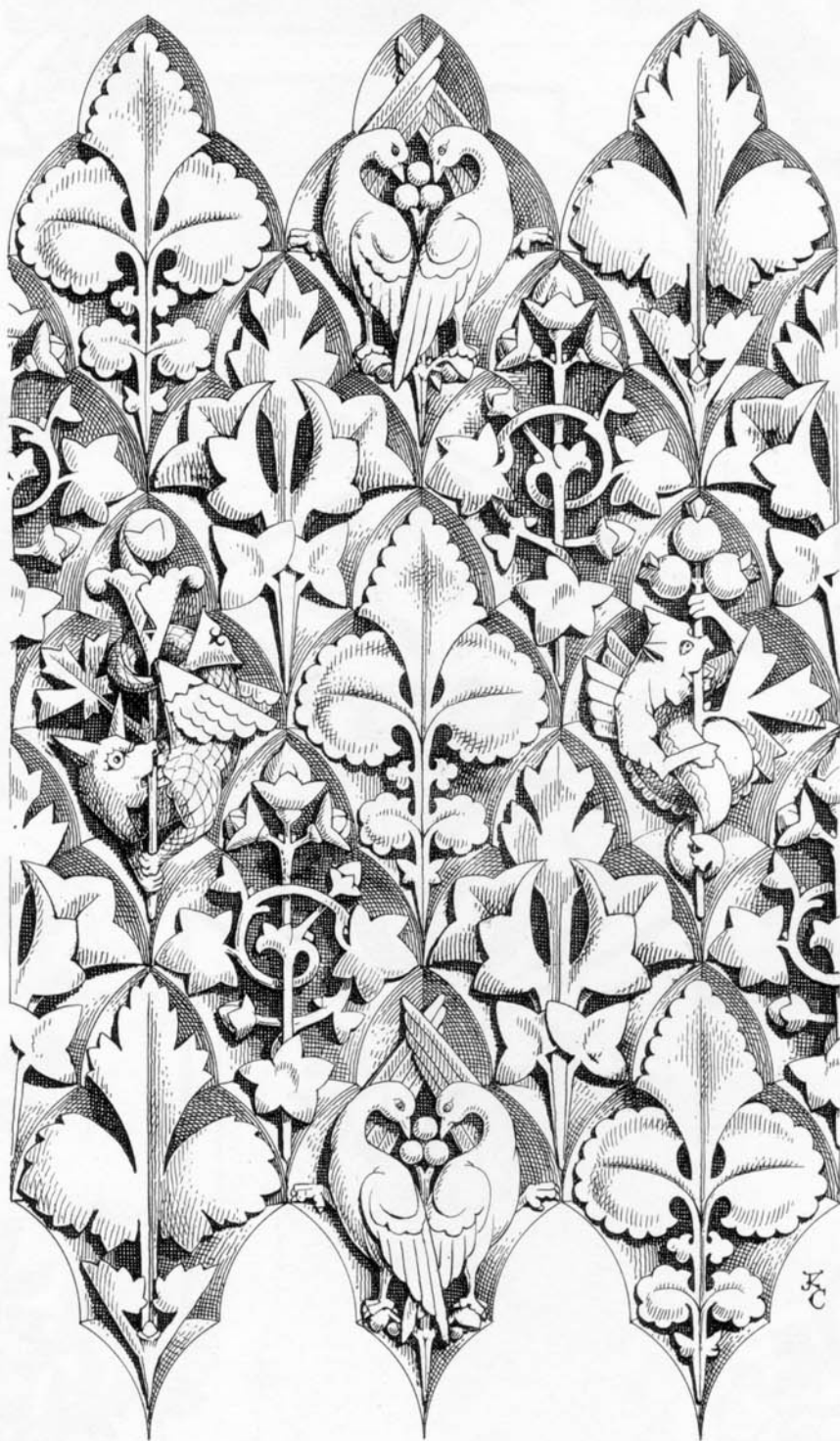


PANEL
DECORATION.





PAINTED DECORATION



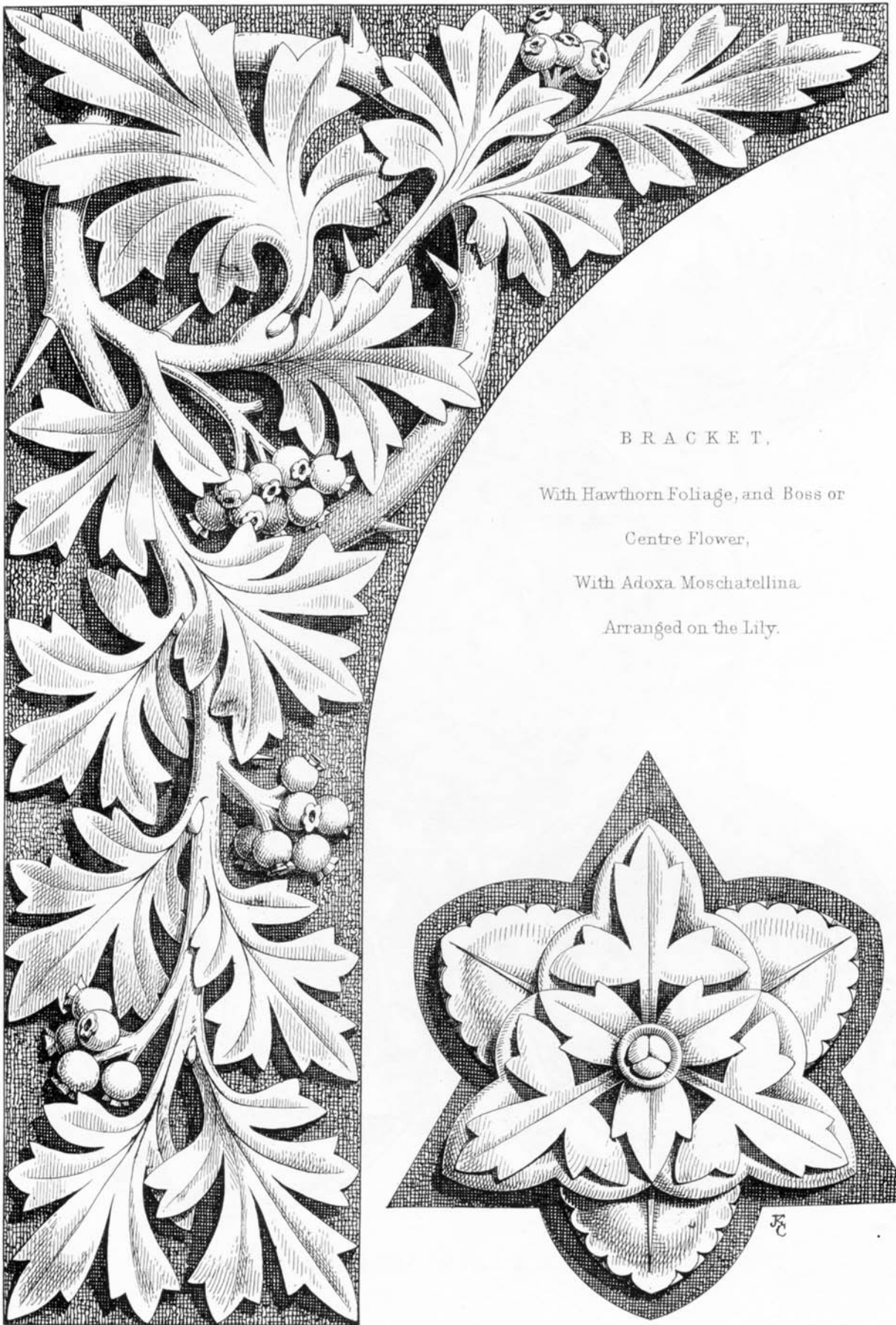
CARVED DIAPERS.



KC



MARBLE INLAY.



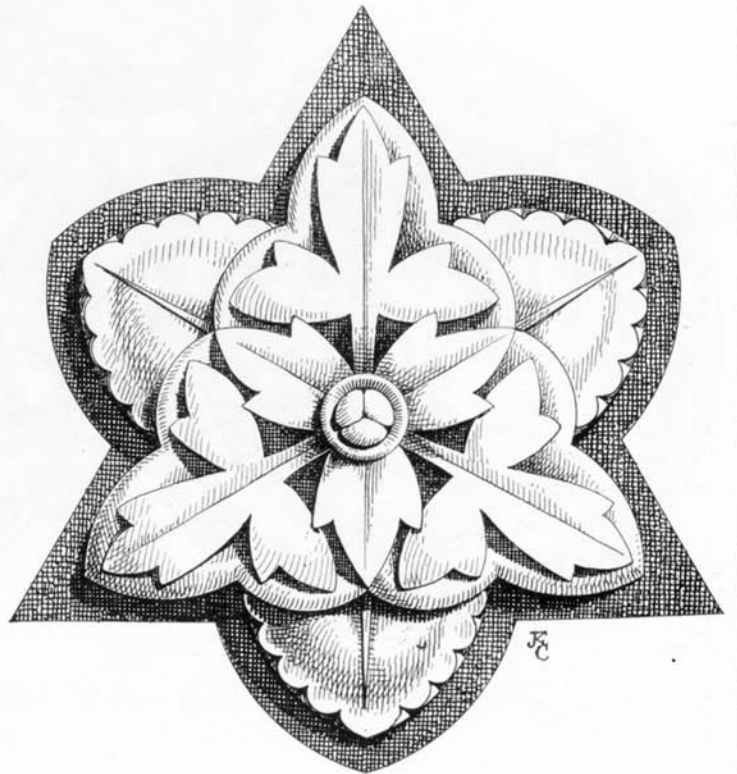
BRACKET.

With Hawthorn Foliage, and Boss or

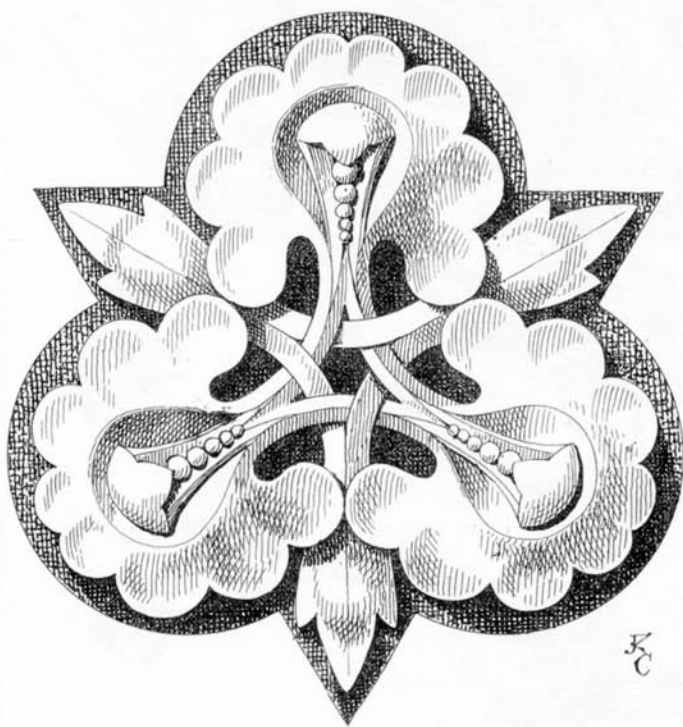
Centre Flower,

With *Adoxa Moschatellina*

Arranged on the Lily.

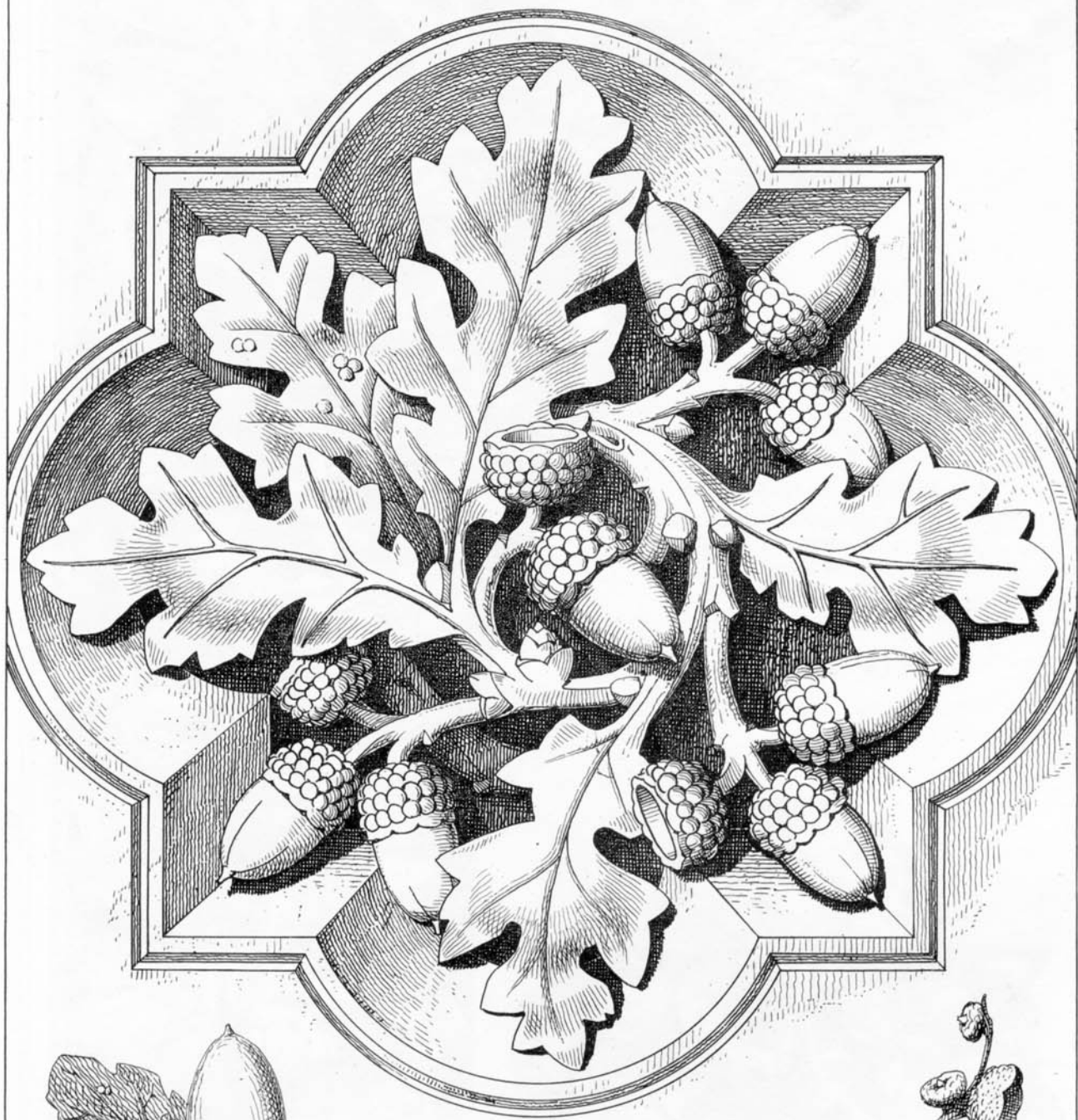


BRACKET
 With Maple Foliage, and
 Centre Flower, or Boss
 of Ground Ivy.



52



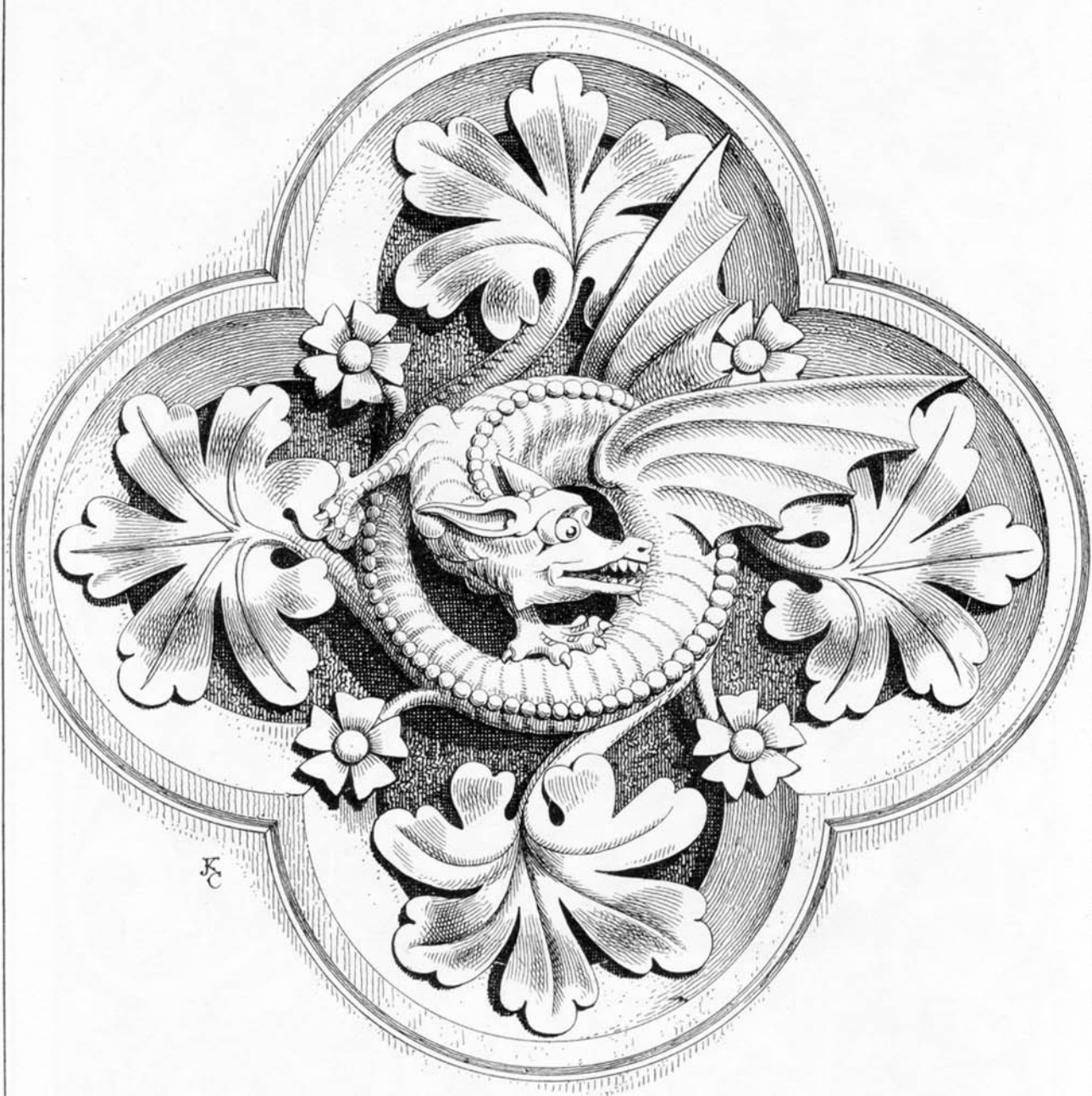


STONE PANEL.

Oak.



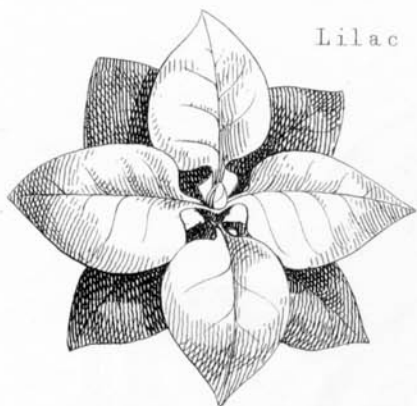
3C



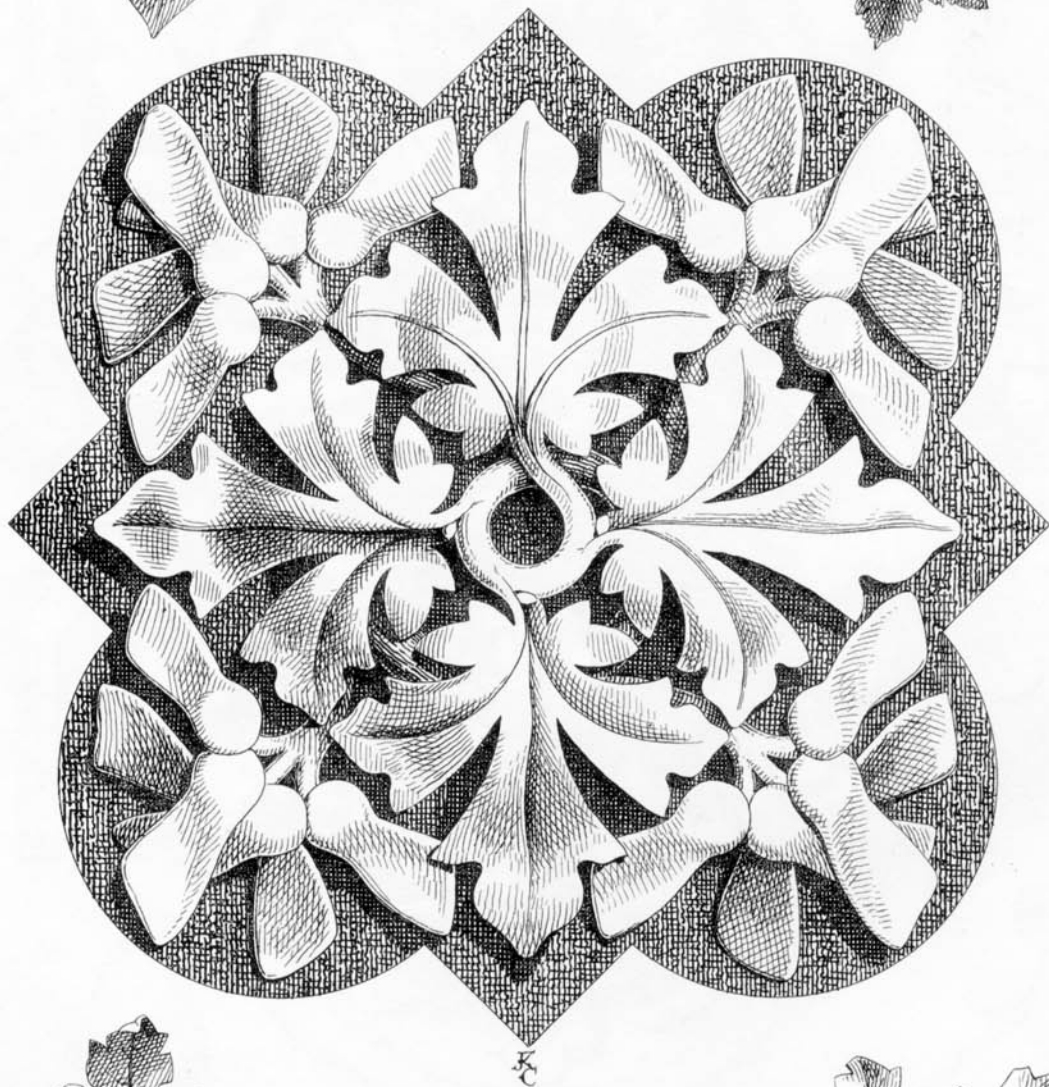
STONE PANEL.

Natural type of foliage. Dove's foot Cranesbill.

Lilac



Sycamore



K
C

PANEL OR BOSS.

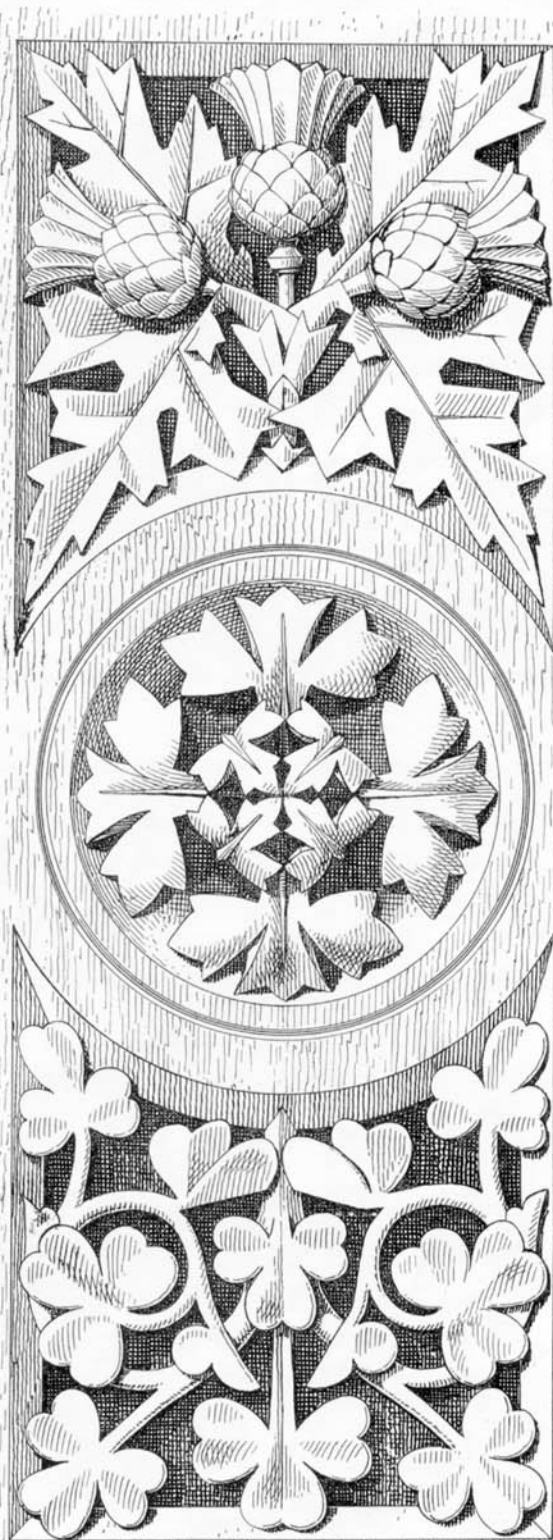
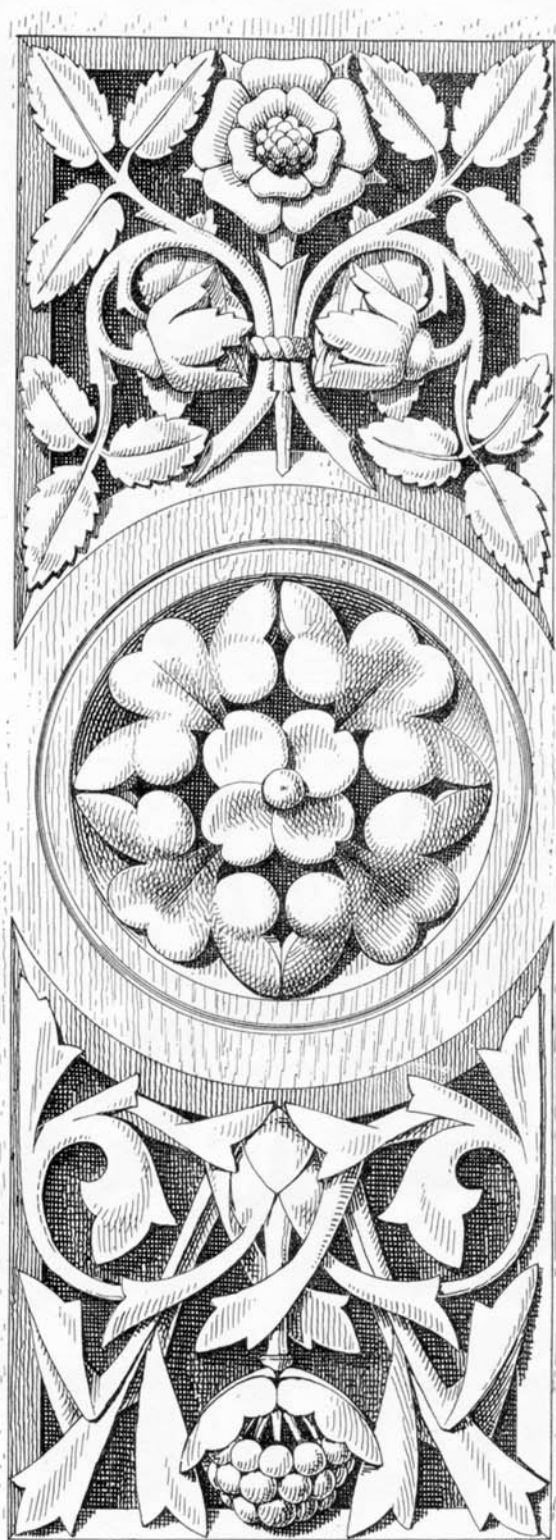
Maple



Maple

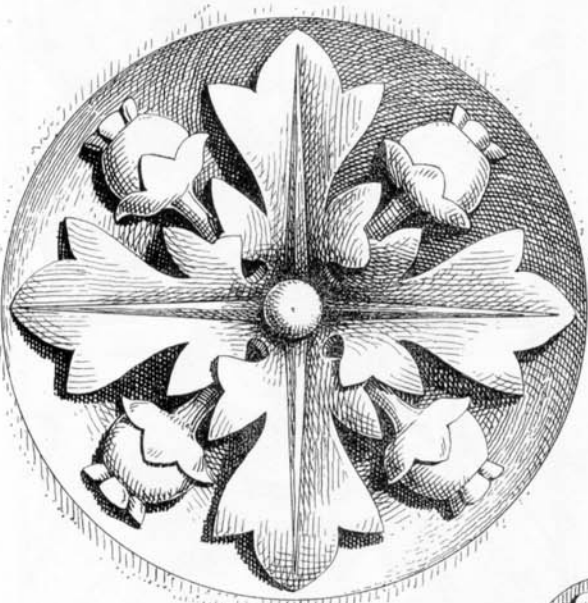


Maple

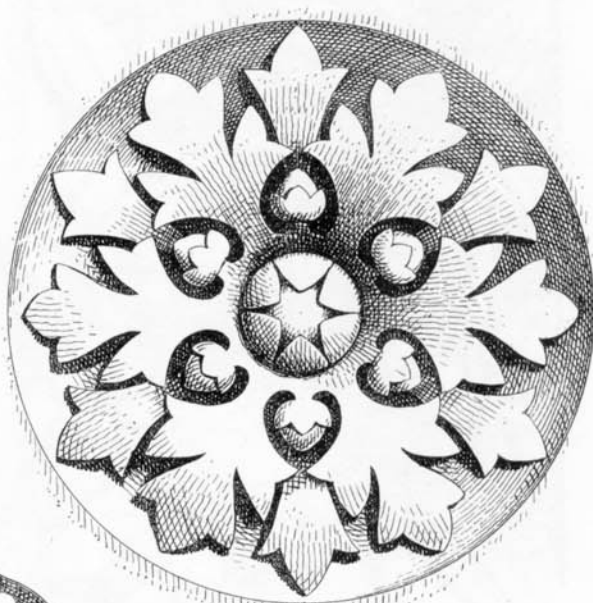


3

CABINET DOORS WITH NATIONAL EMBLEMS.



Hawthorn.

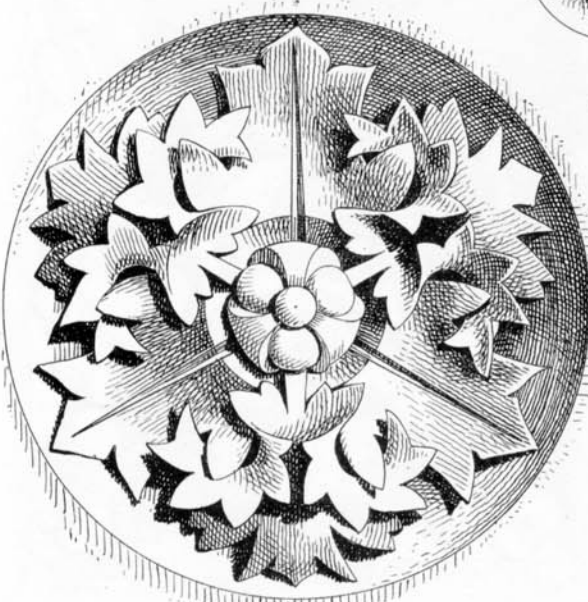


Crowfoot.

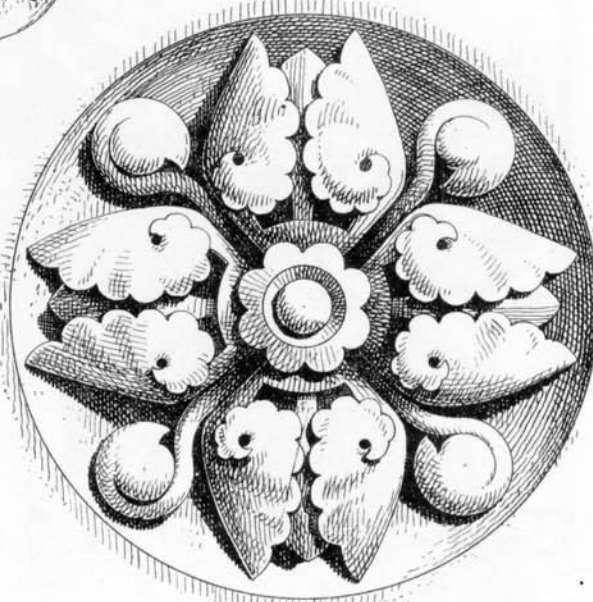


Violet

JC



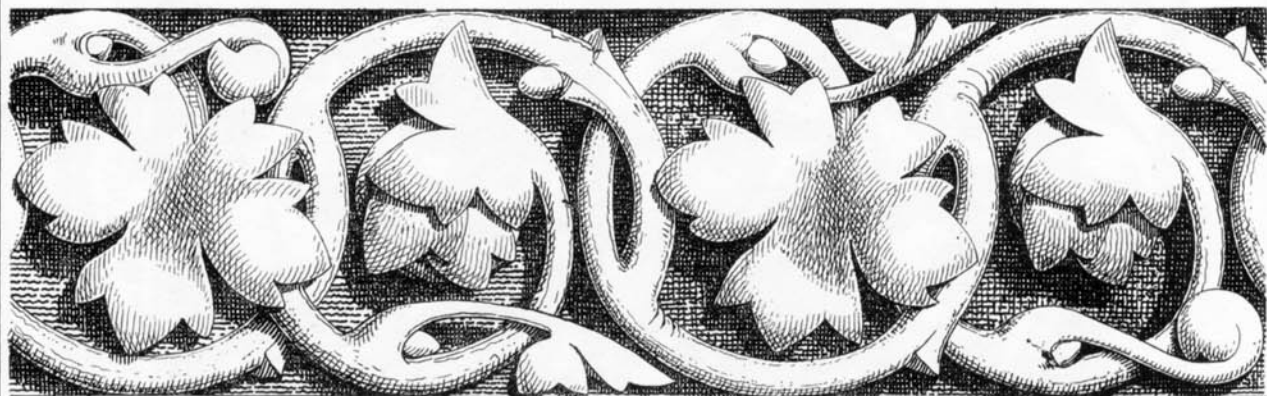
Sea holly.



Ground Ivy.

BOSSES OR CENTRE FLOWERS.

Celery-leaved Crowfoot.



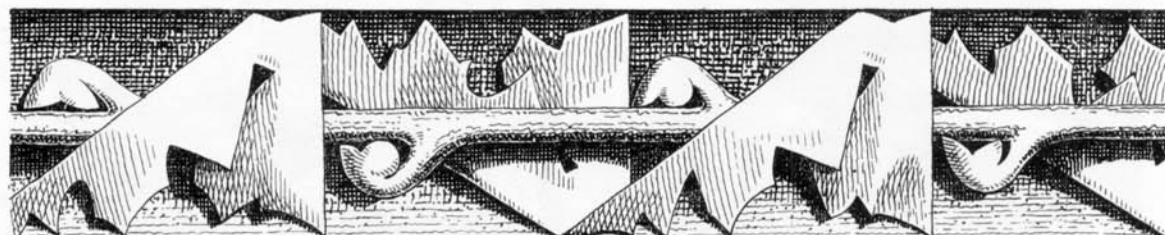
Rose.



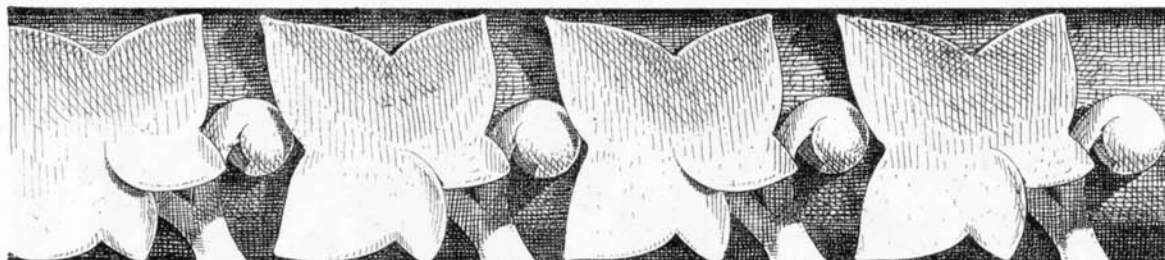
Avens.



Thistle.

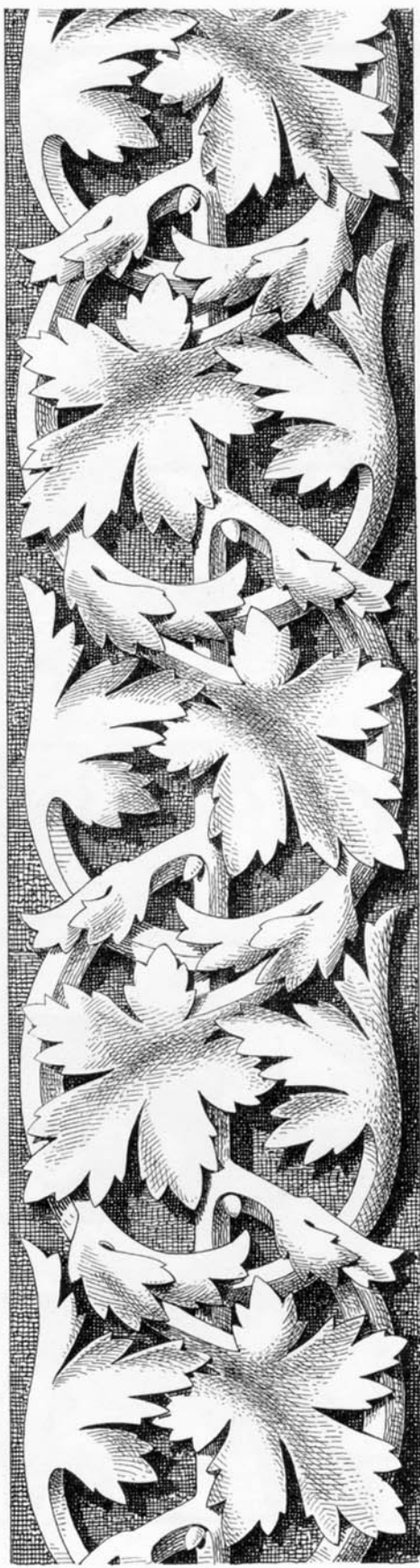
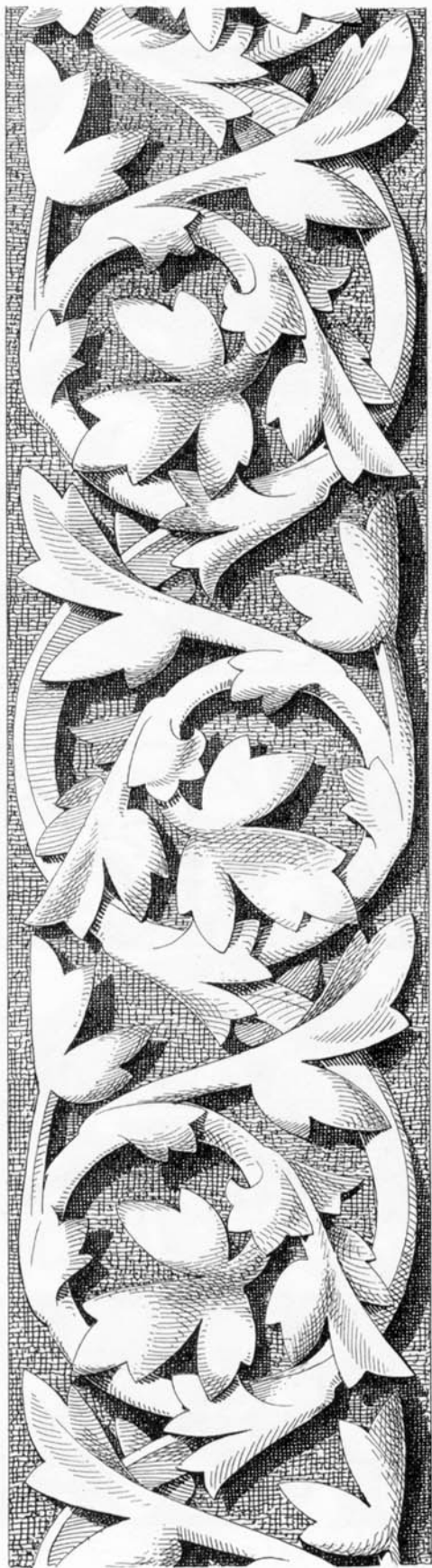


Ivy



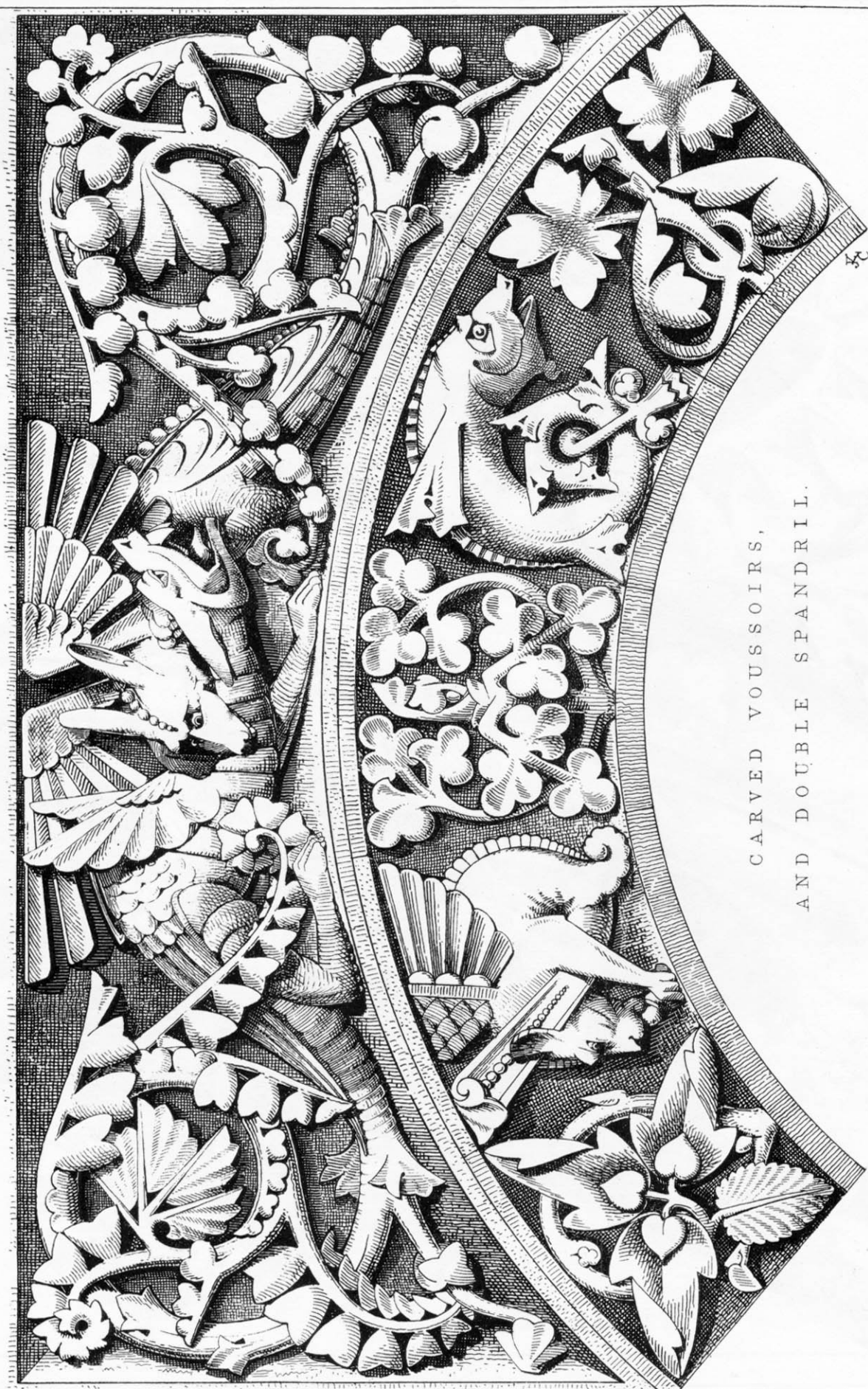
STRING COURSES

JC

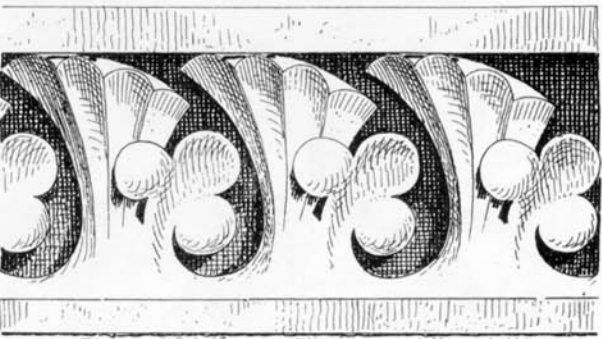
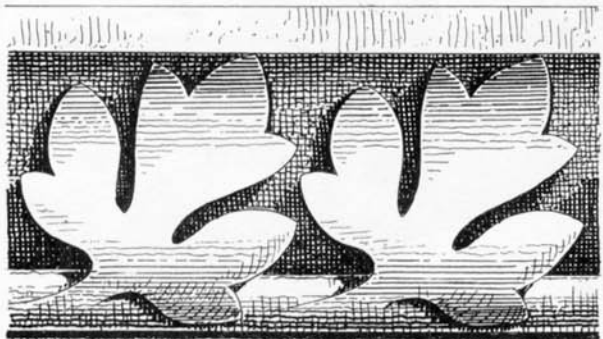
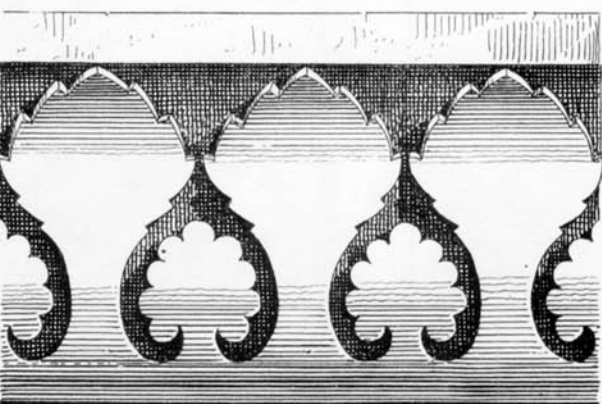
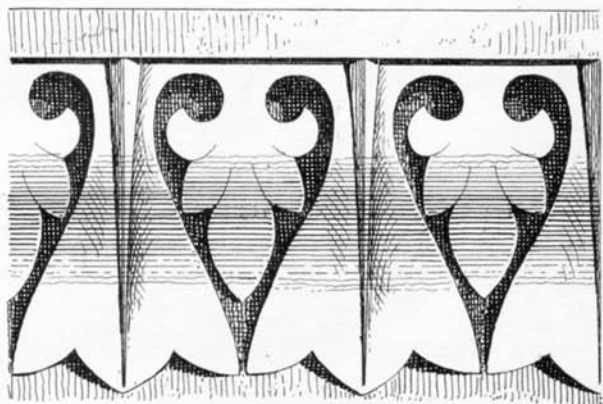
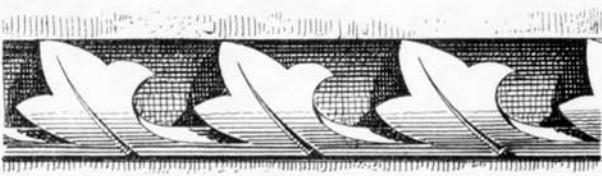
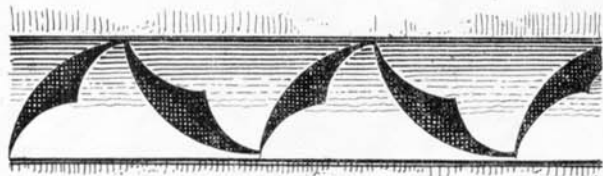
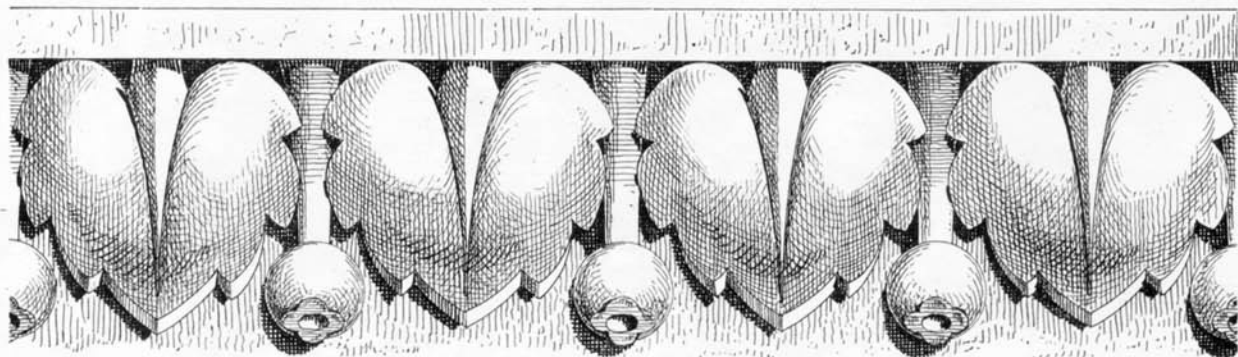
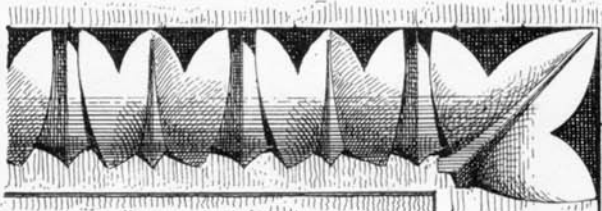
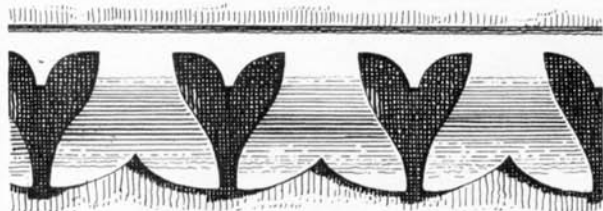


ENRICHED FRIEZES.

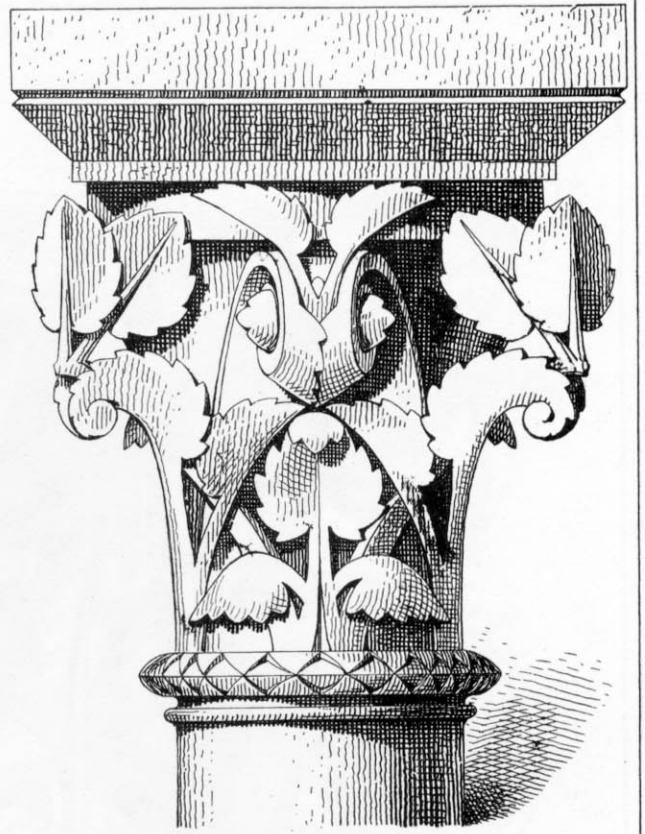
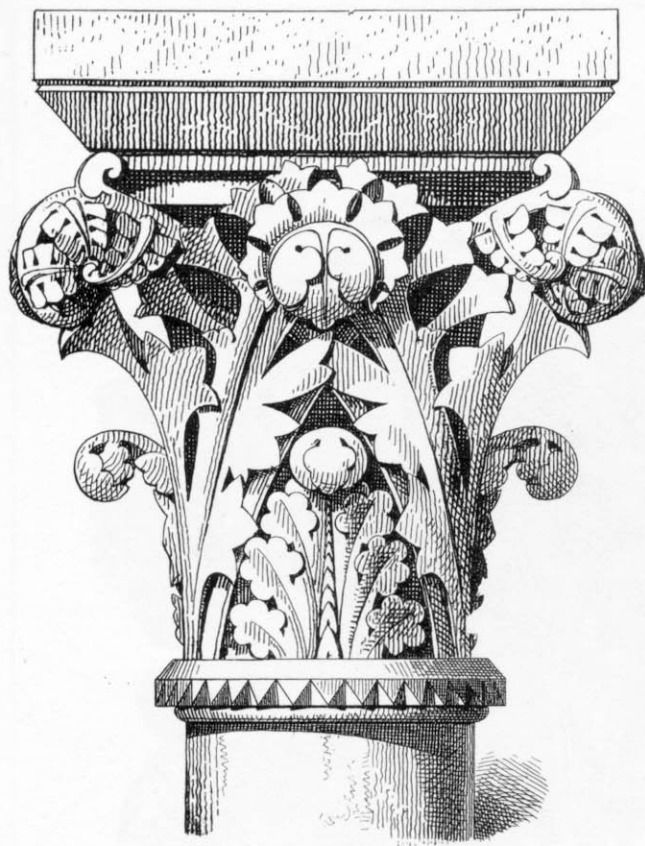
38



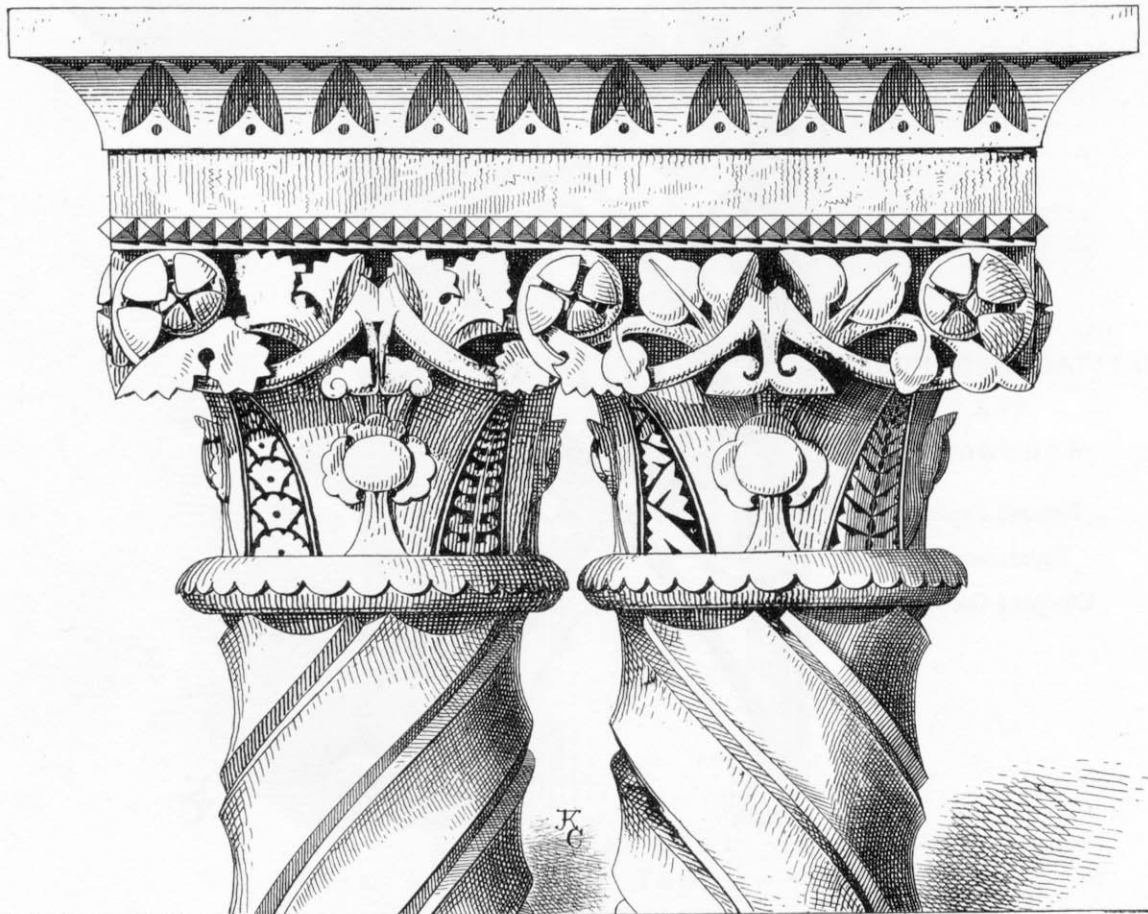
CARVED VOUSSOIRS,
AND DOUBLE SPANDRIL.

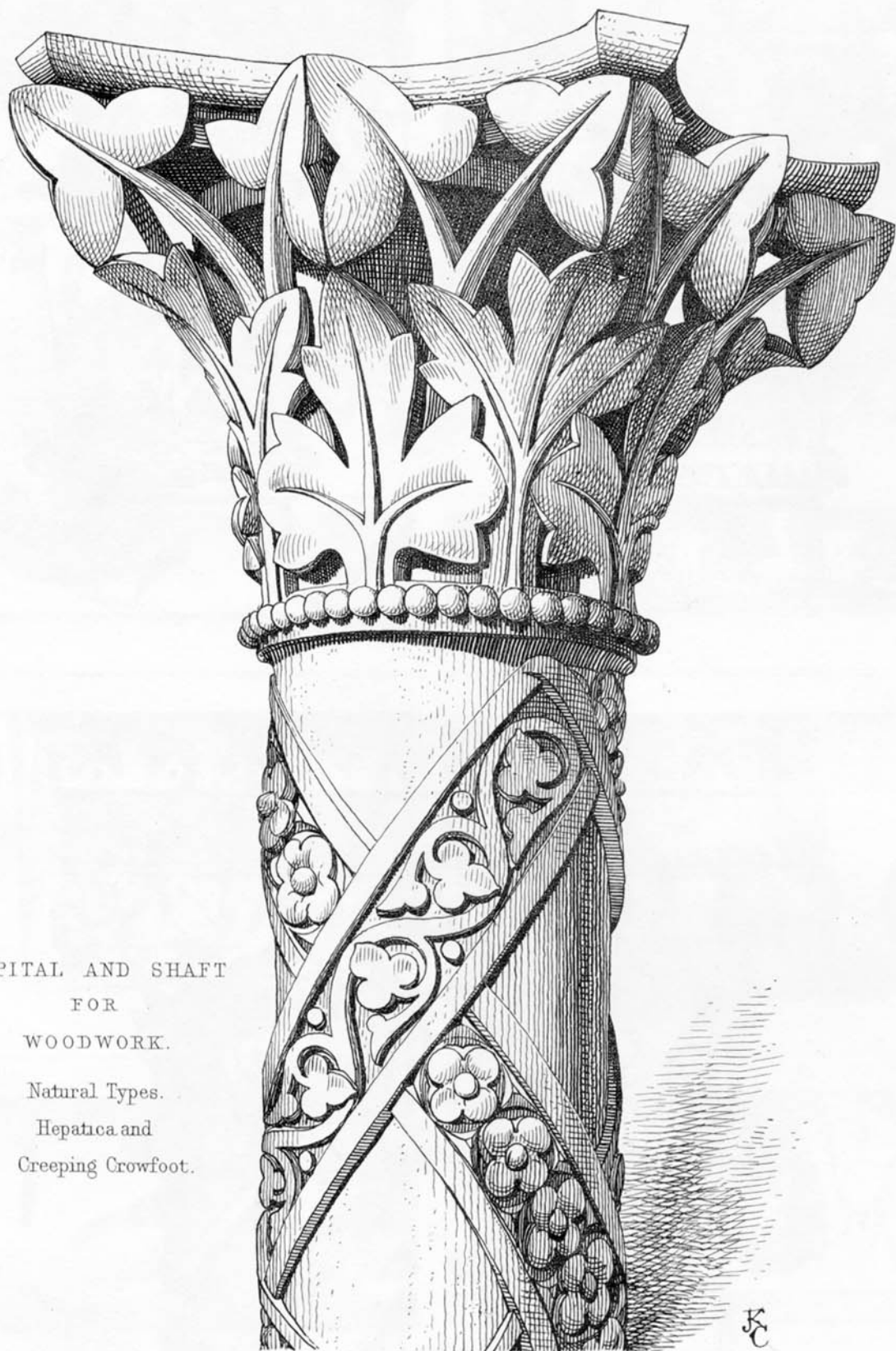


CLASSIC MOULDINGS.



STONE CAPITALS

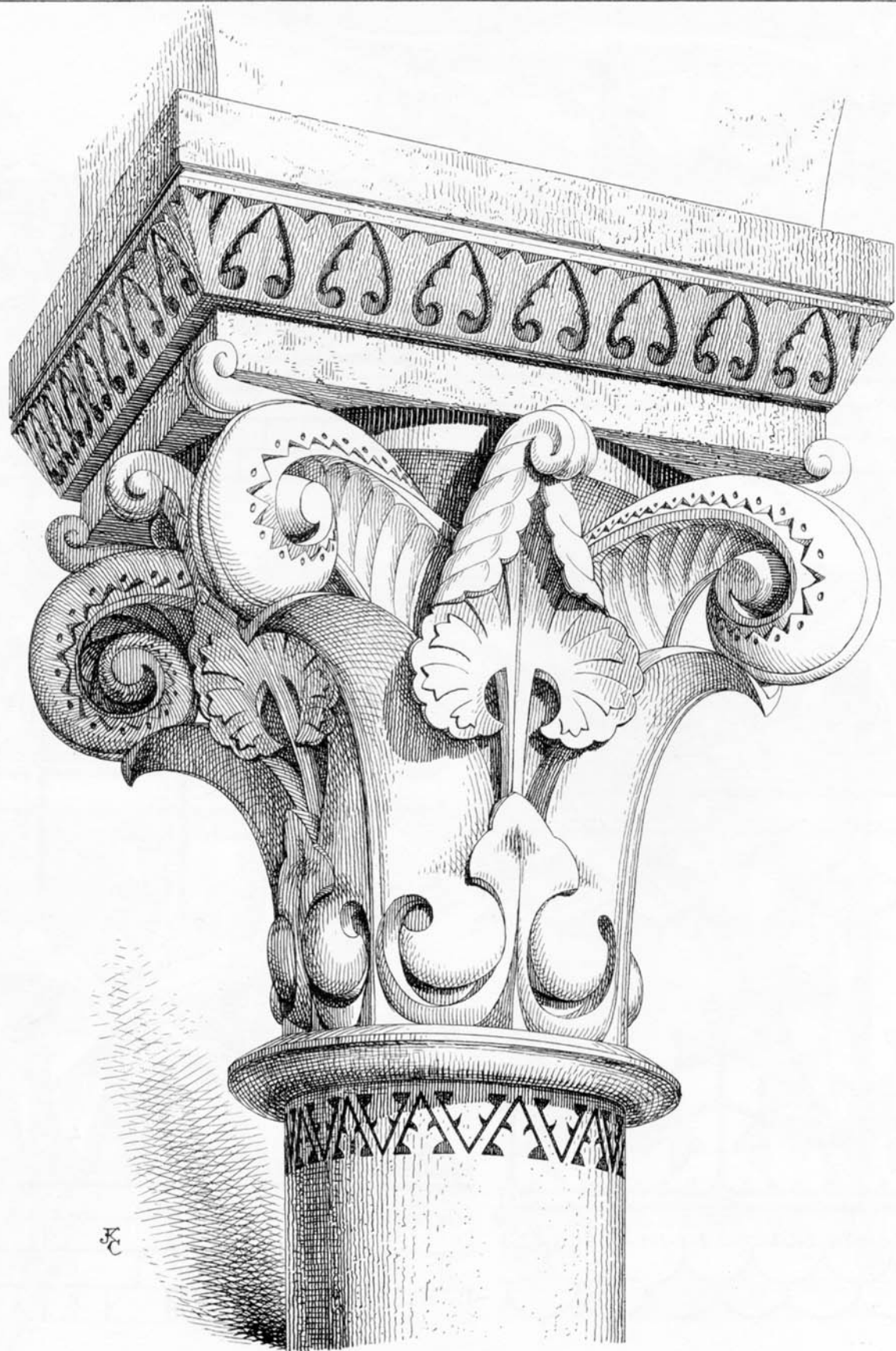




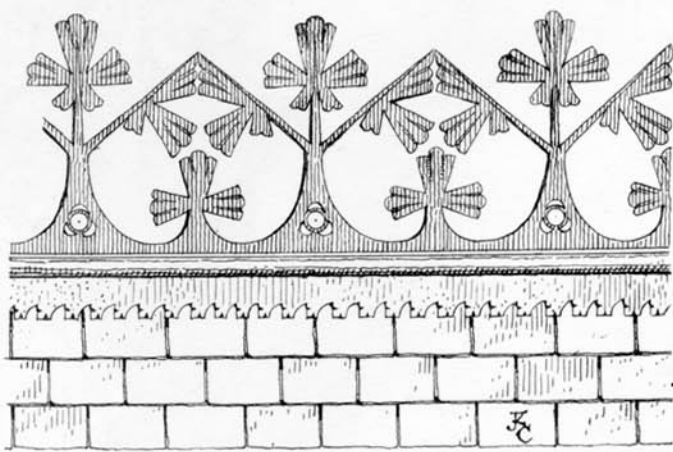
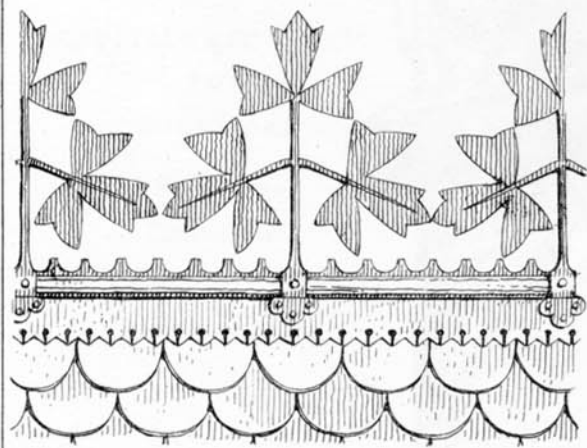
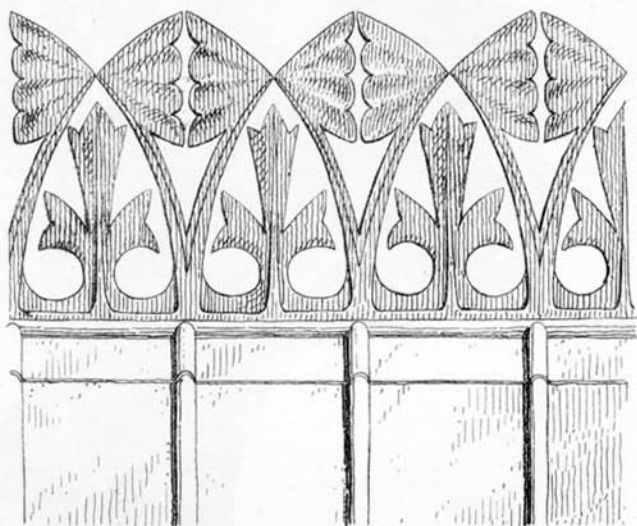
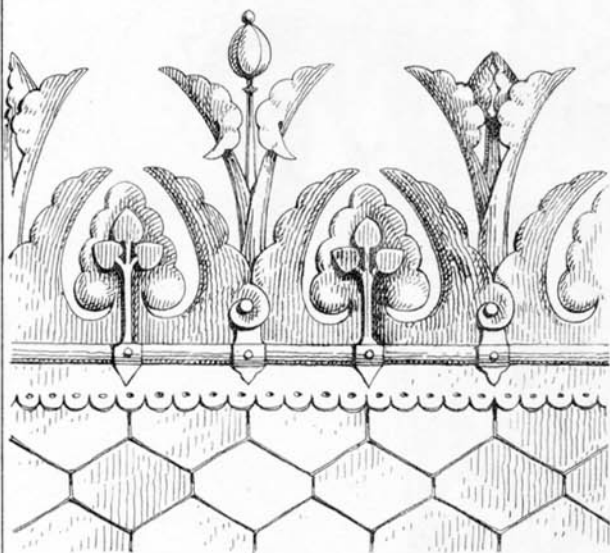
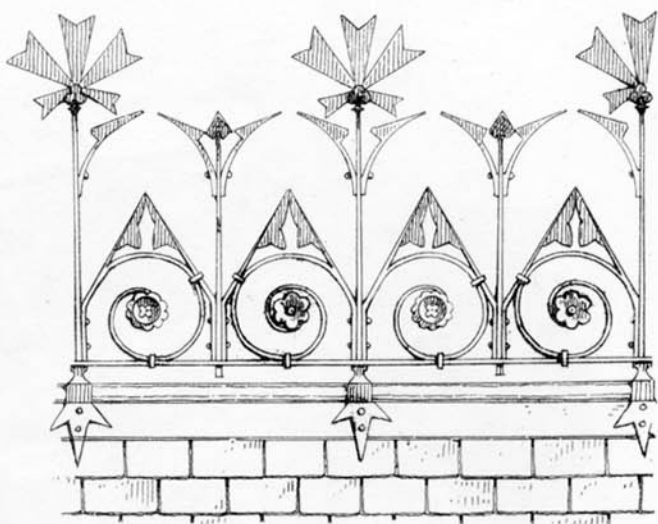
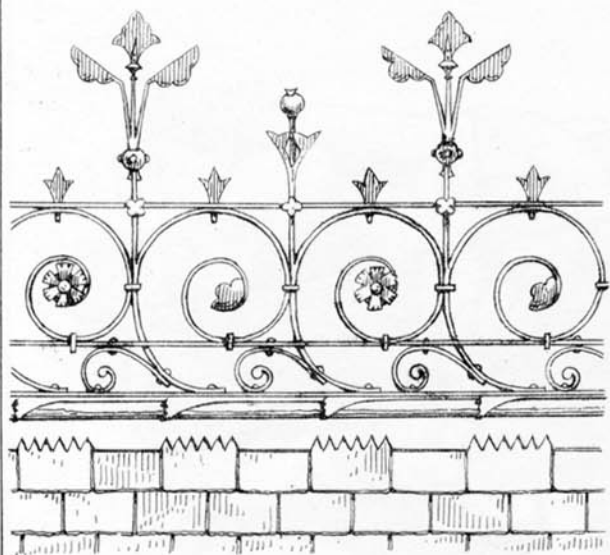
CAPITAL AND SHAFT
FOR
WOODWORK.

Natural Types.
Hepatica and
Creeping Crowfoot.

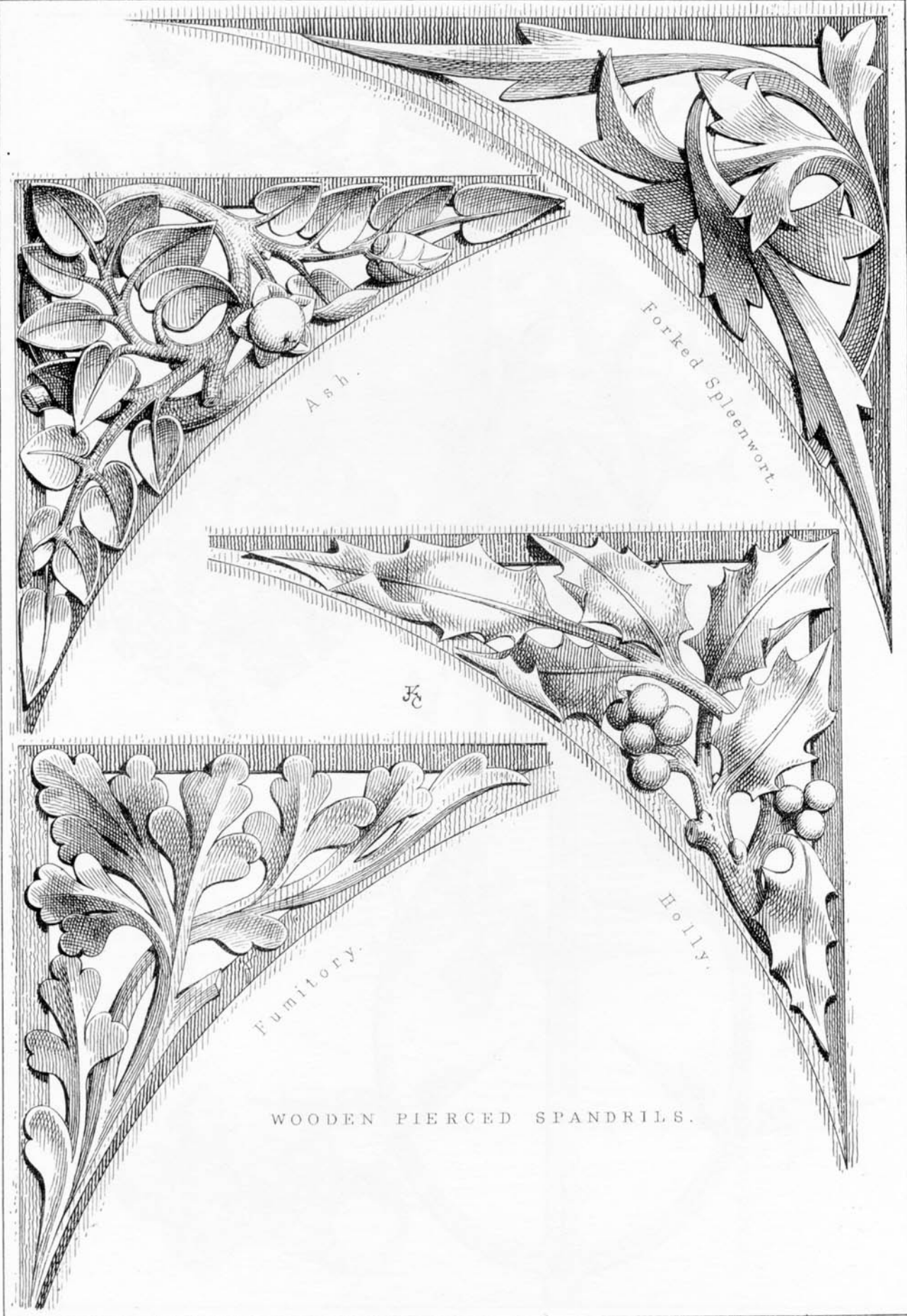
5C

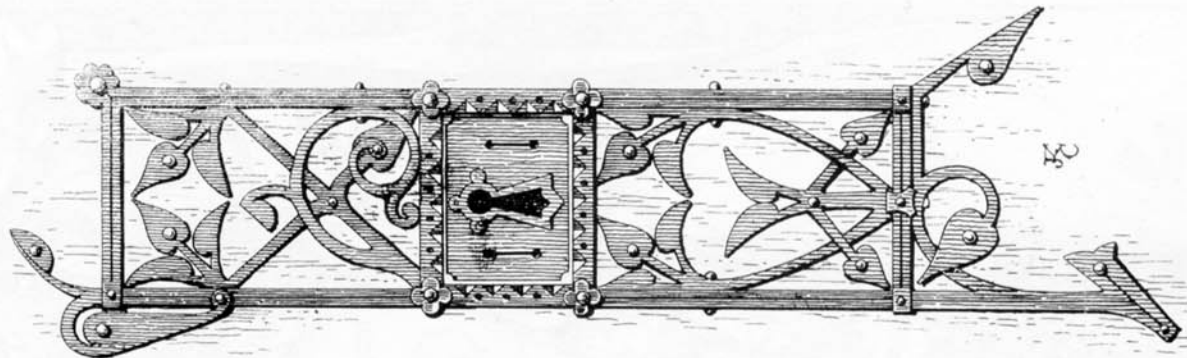


STONE CAPITAL.
Arum and Hart's Tongue Fern.

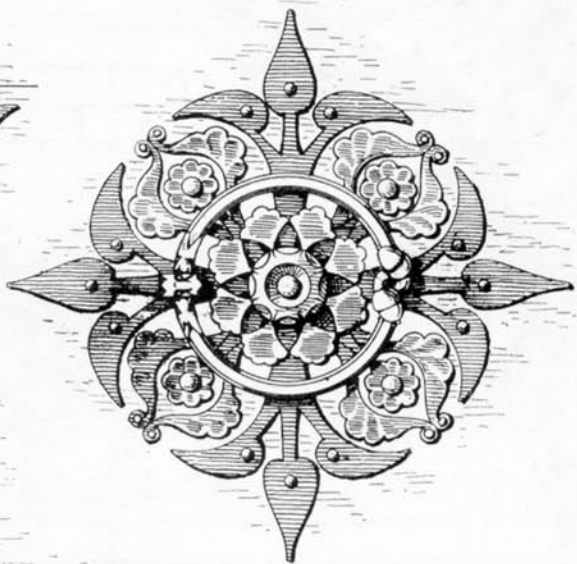
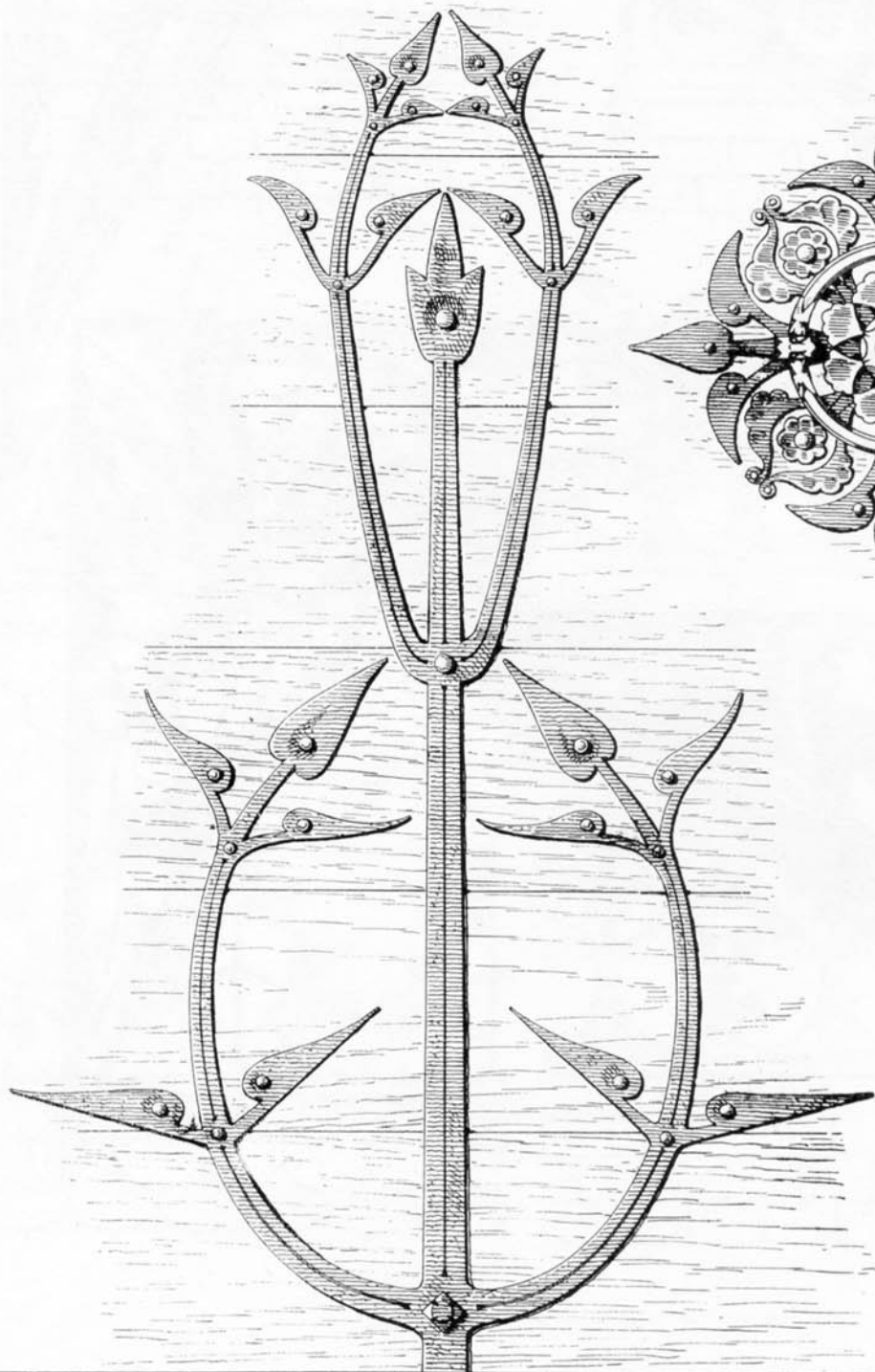


METAL CRESTINGS.



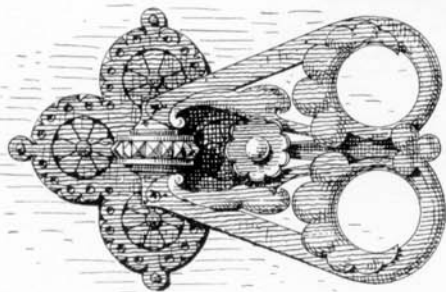
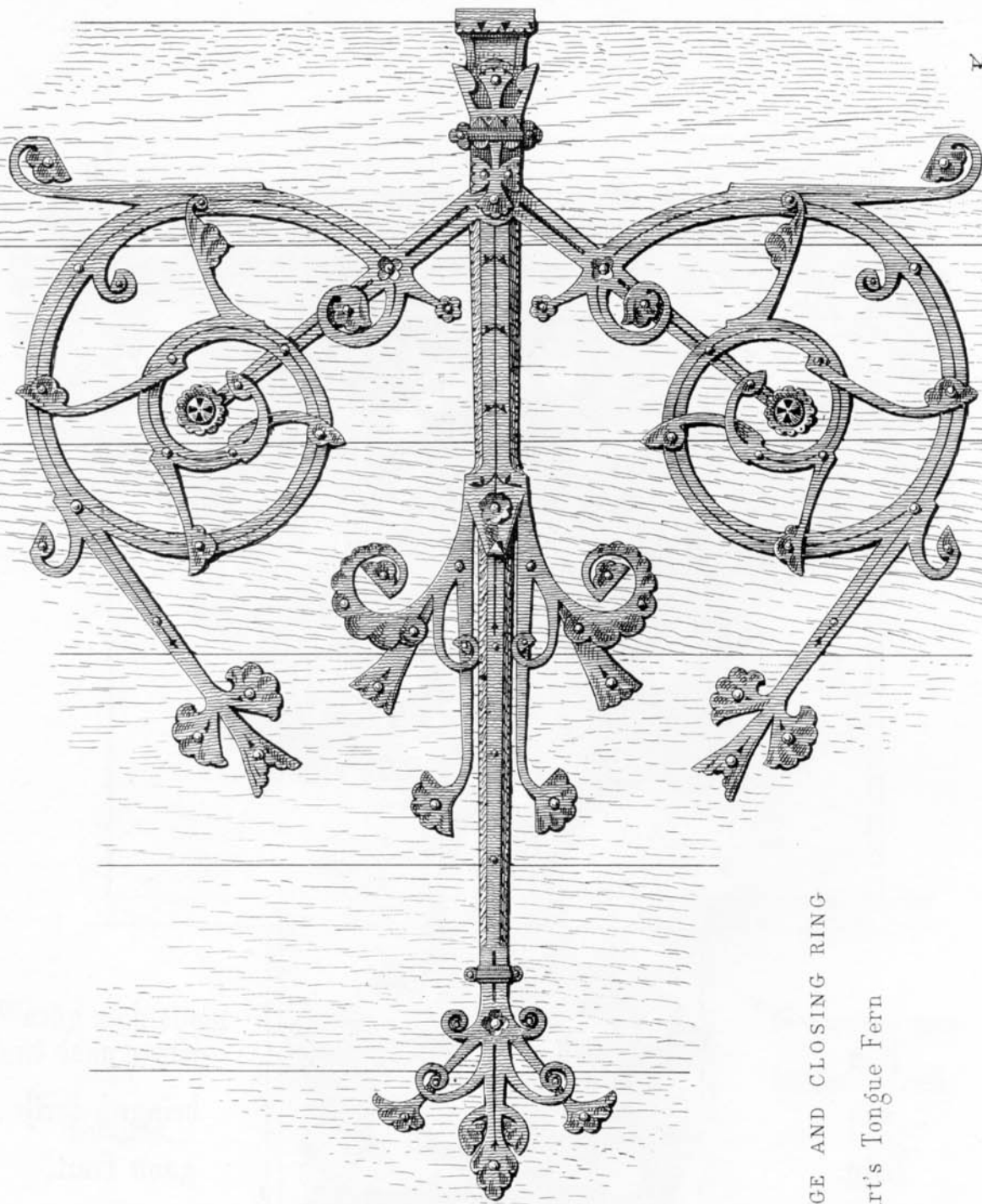


32



HINGE, LOCK PLATE AND CLOSING RING.

Clematis.



WROUGHT IRON HINGE AND CLOSING RING
 Brake and Hart's Tongue Fern

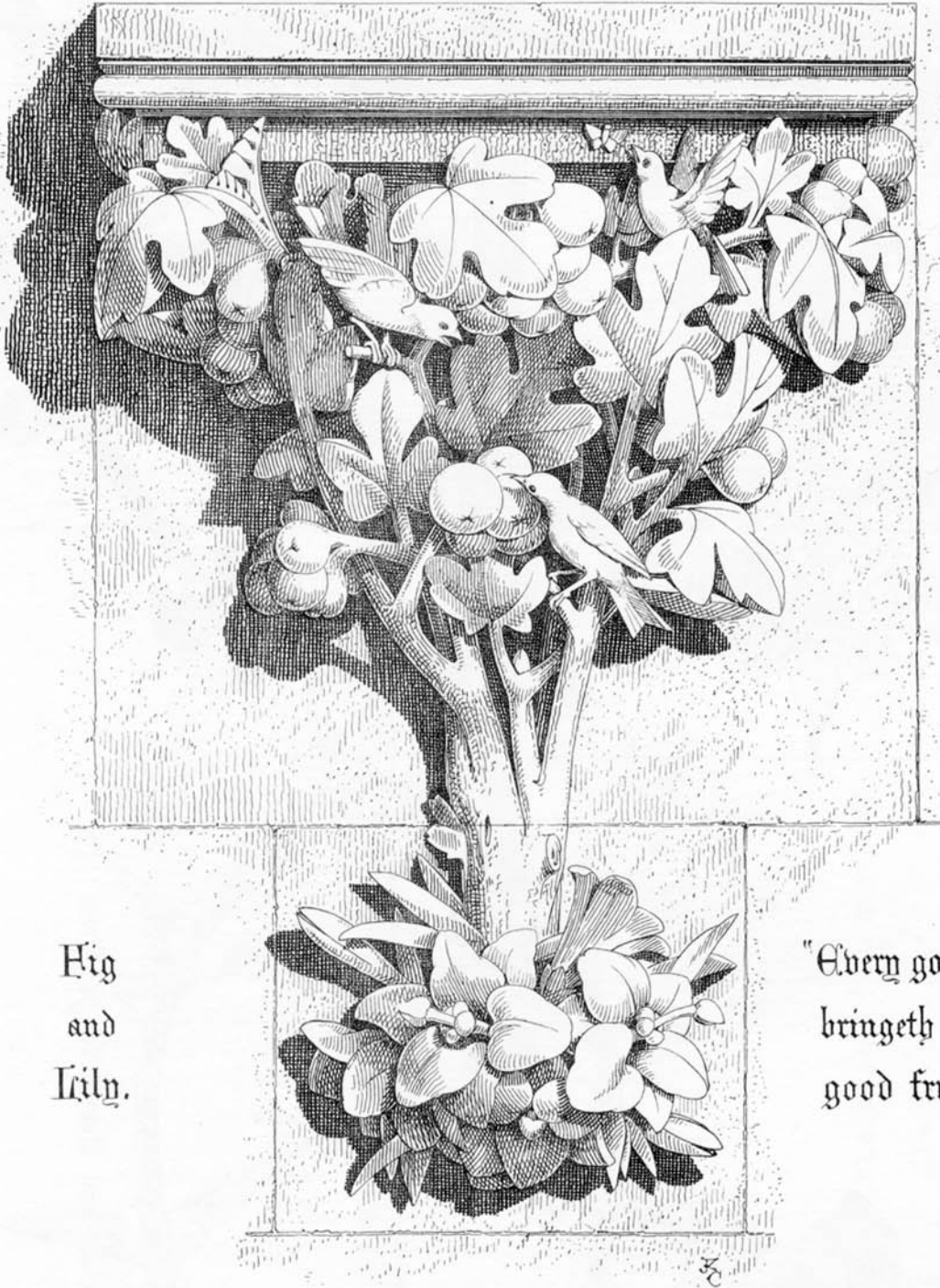
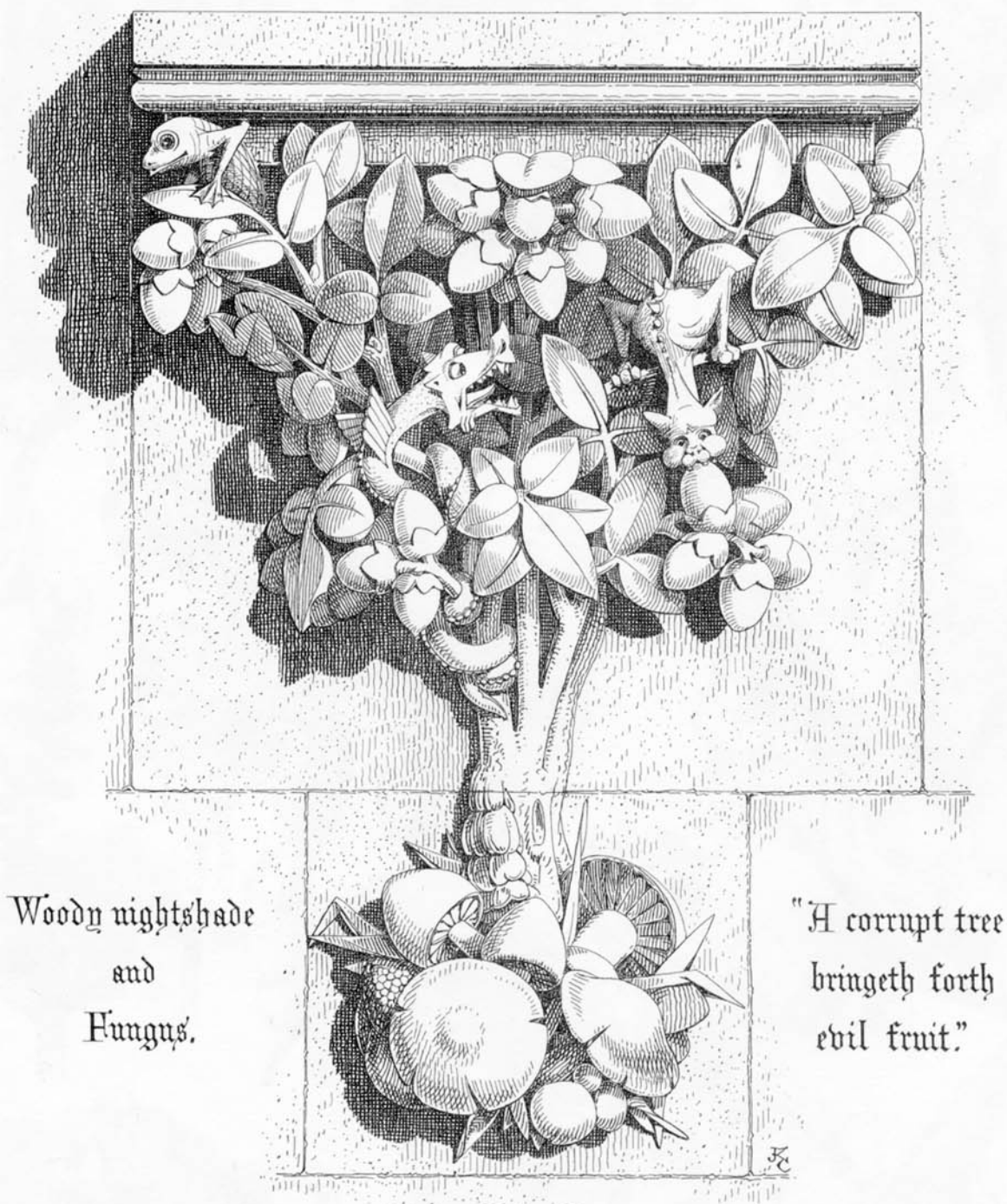


Fig
and
Lily.

"Every good tree
bringeth forth
good fruit."

STONE CORBEL.



Woody nightshade
and
Fungus.

"A corrupt tree
bringeth forth
evil fruit."

STONE CORBEL.

